



"Gulf Armor"

WOOD GLAZED OR OPAQUE SINGLE DOOR w/ SIDELITE(S)

IN SWING/OUT SWING "IMPACT"

GENERAL NOTES:

1. This product has been evaluated and is in compliance with the 6th Edition (2017) Florida Building Code (FBC) structural requirements including the "High Velocity Hurricane Zone" (HVHZ).
2. Product anchors shall be as listed and spaced as shown on details. Anchor embedment to base material shall be beyond wall dressing or stucco.
3. When used in the "HVHZ", this product complies with Section 1626 of the Florida Building Code and does not require an impact resistant covering.
4. For 2x stud framing construction, anchoring of these units shall be the same as that shown for 2x buck masonry construction.
5. Site conditions that deviate from the details of this drawing require further engineering analysis by a licensed engineer or registered architect.
6. Outswing configurations meet water infiltration requirements for "HVHZ".
7. Inswing configurations do not meet the water infiltration requirements for the "HVHZ" and shall be installed only in non-habitable areas or at habitable locations protected by an overhang or canopy such that the angle between the edge of canopy or overhang to sill is less than 45 degrees.

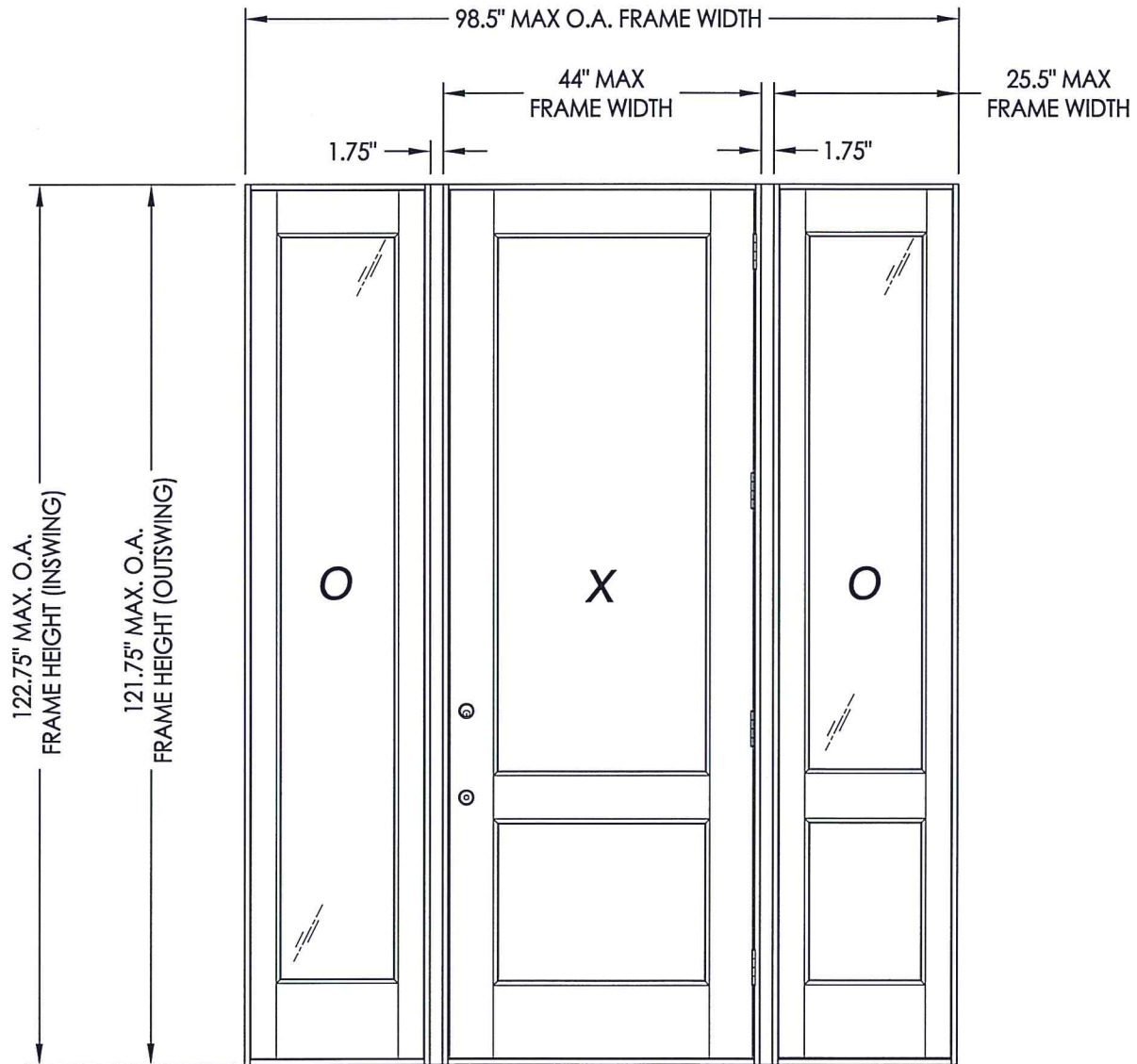
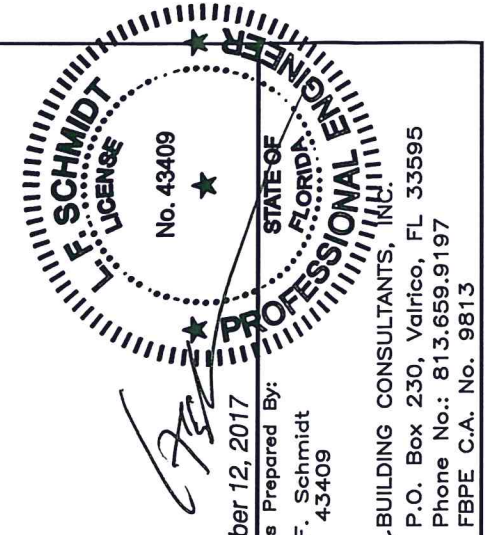


TABLE OF CONTENTS	
SHEET #	DESCRIPTION
1	Typical Elevations, Design Pressures & General Notes
2	Door Panel Details
3	Door Panel Details
4	Sidelite Panel Details
5	Glazing & Panel Infil Details
6	Elevations
7	Horizontal & Vertical Cross Sections (2X Buck)
8	Horizontal & Vertical Cross Sections (1X Buck)
9	Horizontal Cross Sections
10	Vertical Cross Sections (Thresholds)
11	Buck & Frame Anchoring (OX)
12	Buck & Frame Anchoring (OXO)
13	Hardware Details
14	Bill of Materials & Components

CONFIGURATION	DESIGN PRESSURE (PSF) INSWING		DESIGN PRESSURE (PSF) OUTSWING	
	POSITIVE	NEGATIVE	POSITIVE	NEGATIVE
OX, XO, OXO	+60.0	-+60.0	+60.0	-60.0



October 12, 2017
 Documents Prepared By:
 Lyndon F. Schmidt
 P.E. No. 43409

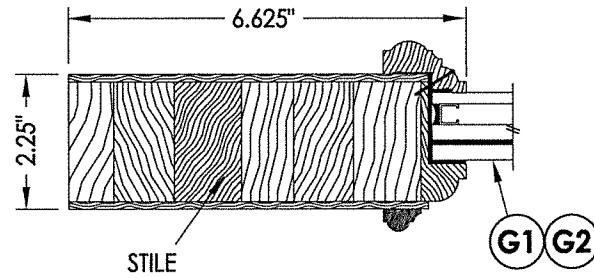
PRODUCT:
 SOUTHEASTERN SASH & DOOR
 WOOD DOOR

PART OR ASSEMBLY:
 TYPICAL ELEVATION, DESIGN
 PRESSURES & GENERAL NOTES

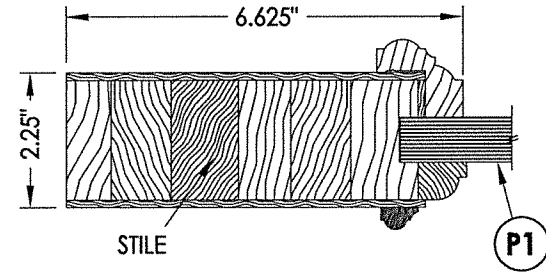
NO.	DATE	BY	REVISIONS
1	10/12/17	LFS	UPDATE TO 6TH ED. (2017) FBC

DATE: 5/10/17
 SCALE: N.T.S.
 DWG. BY: JK
 CHK. BY: LFS
 DRAWING NO.: FL-22347.7
 SHEET 1 OF 14

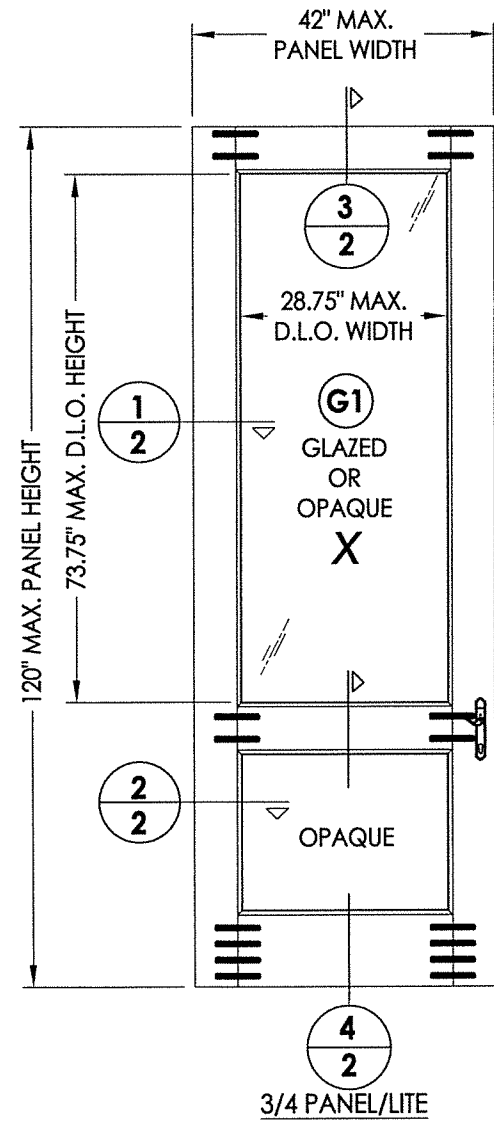
R:\Clients\Southeastern Sash & Door\A - Florida Product Approvals\FL-22347\C - Drawings\FL-22347 (2017)\FL-22347.6-8.dwg, 2.2



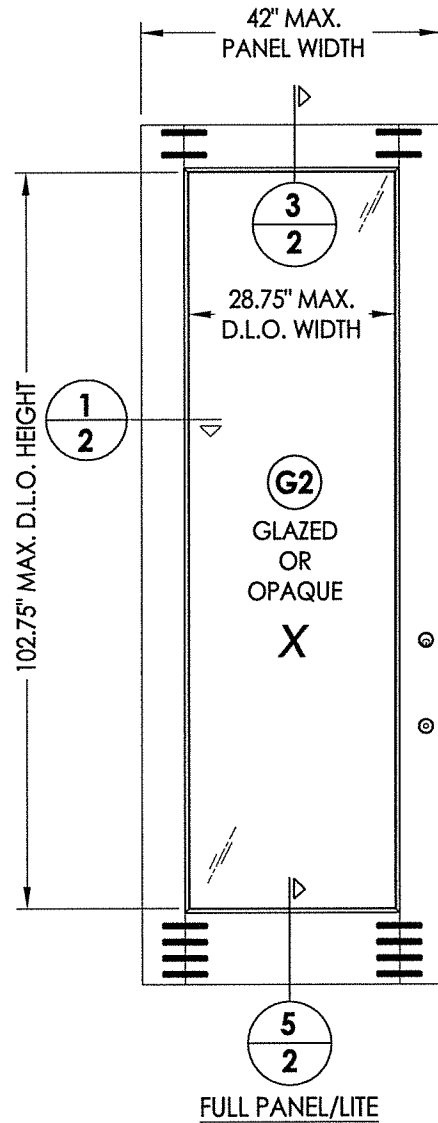
1
2 HORIZONTAL CROSS SECTION



2
2 HORIZONTAL CROSS SECTION



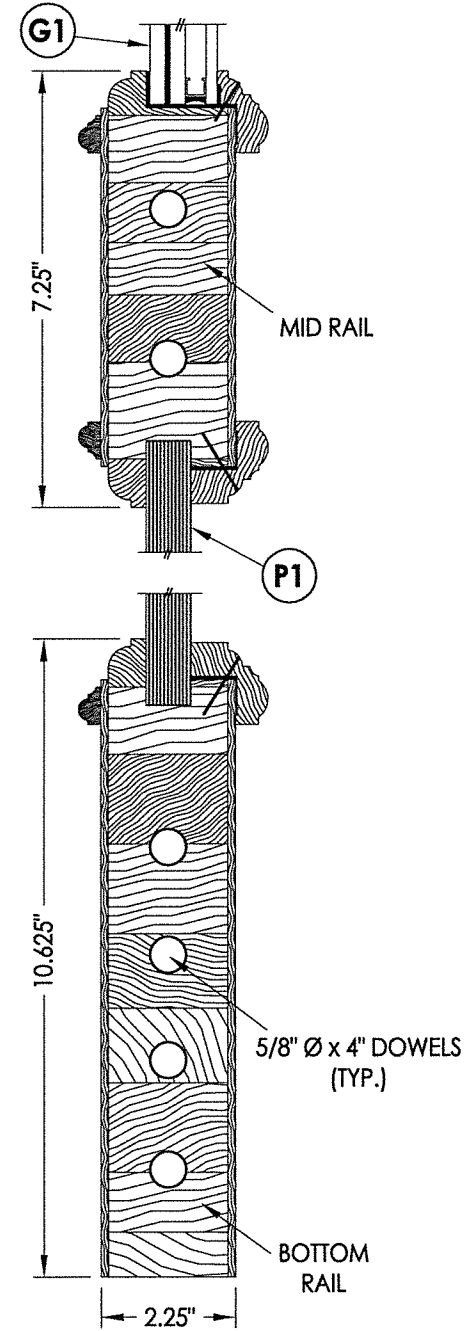
4
2 3/4 PANEL/LITE



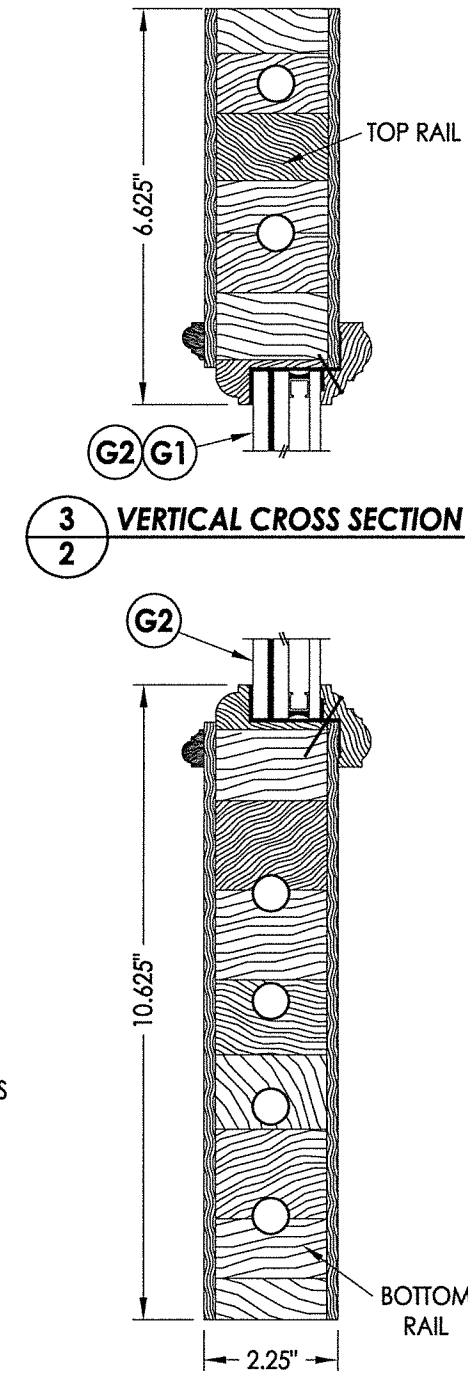
5
2 FULL PANEL/LITE

40 WOOD DOOR PANEL (3'-6")
Glazed or Opaque

WOOD DOOR COMPONENTS:
 ENGINEERED STAVE CORE: SIPO (UTILE) (G = 0.53)
 VENEER/EDGES: CYPRESS (G = 0.42)
 NOTE: VENEER/EDGE MAY INCLUDE OAK, CHERRY, WALNUT OR
 OTHER OPTIONAL HARDWOOD SPECIES w/ G >= 0.42.



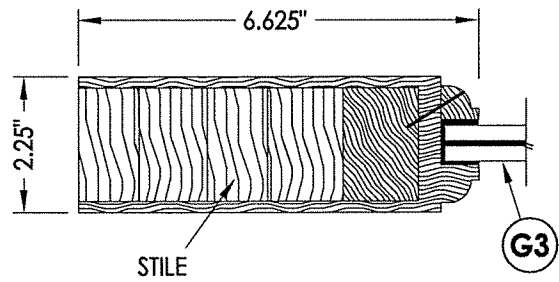
4
2 VERTICAL CROSS SECTION



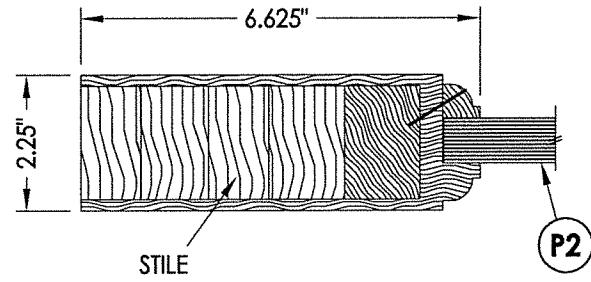
5
2 VERTICAL CROSS SECTION

October 12, 2017
 Documents Prepared By:
 Lyndon F. Schmidt
 P.E. No. 43409
 R.W. BUILDING CONSULTANTS, INC.
 P.O. Box 230, Valrico, FL 33595
 Phone No.: 813.659.9197
 FBPE C.A. No. 9813

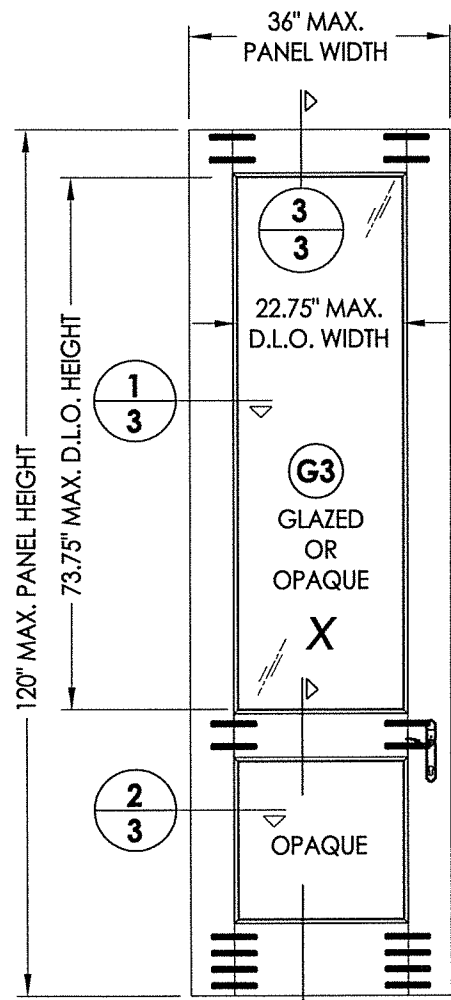
PRODUCT:		SOUTHEASTERN SASH & DOOR WOOD DOOR	
PART OR ASSEMBLY:		DOOR PANEL DETAILS	
DATE:	3/27/17	NO.	DATE
SCALE:	N.T.S.	1	10/12/17 UPDATE TO 6TH ED. (2017) FBC
DWG. BY:	JK	LFS	BY
CHK. BY:	LFS	REVISIONS	
DRAWING NO.:	FL-22347.7		
SHEET	2	OF 14	



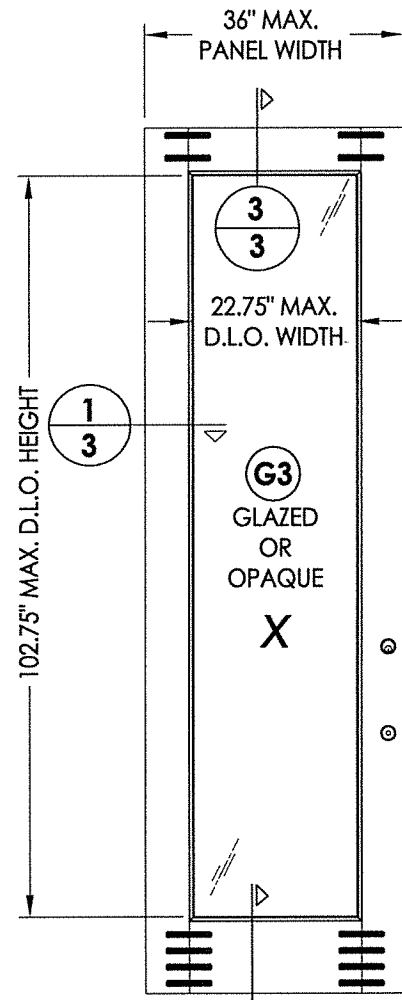
1
3 HORIZONTAL CROSS SECTION



2
3 HORIZONTAL CROSS SECTION



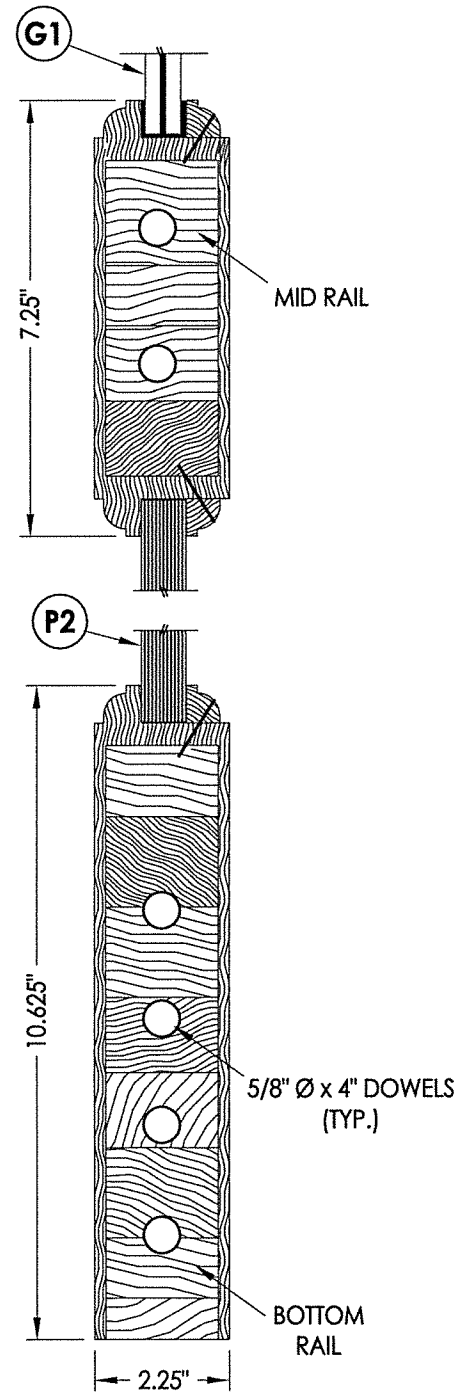
4
3 3/4 PANEL/LITE



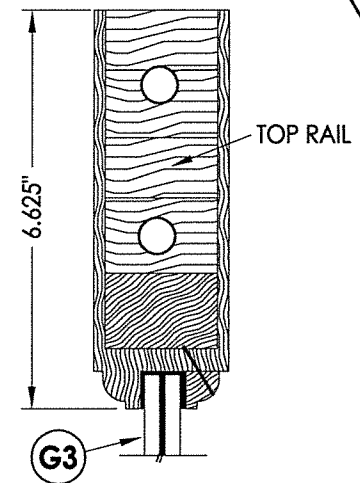
5
3 FULL PANEL/LITE

41 WOOD DOOR PANEL (3'-0")
Glazed or Opaque

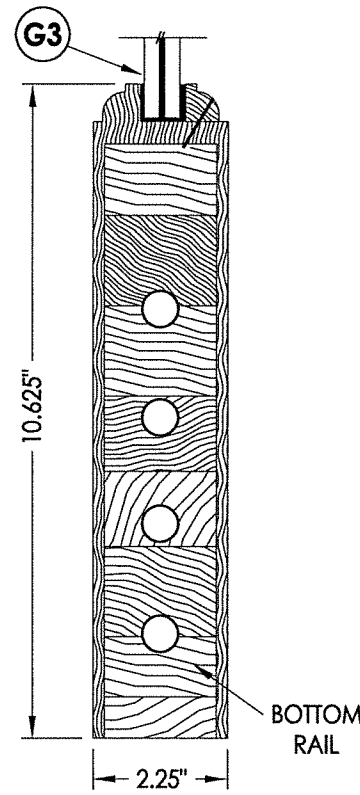
WOOD DOOR COMPONENTS:
 ENGINEERED STAVE CORE: SIPO (UTILE) (G = 0.53)
 VENEER/EDGES: CYPRESS (G = 0.42)
 NOTE: VENEER/EDGE MAY INCLUDE OAK, CHERRY, WALNUT OR
 OTHER OPTIONAL HARDWOOD SPECIES w/ G >= 0.42.



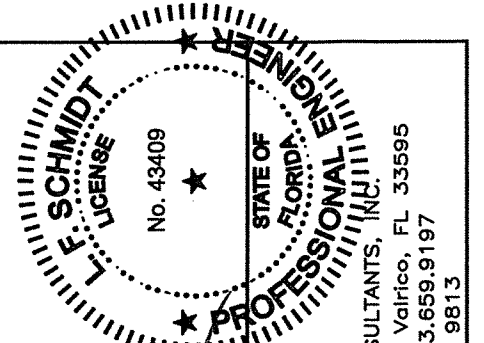
4
3 VERTICAL CROSS SECTION



3
3 VERTICAL CROSS SECTION



5
3 VERTICAL CROSS SECTION

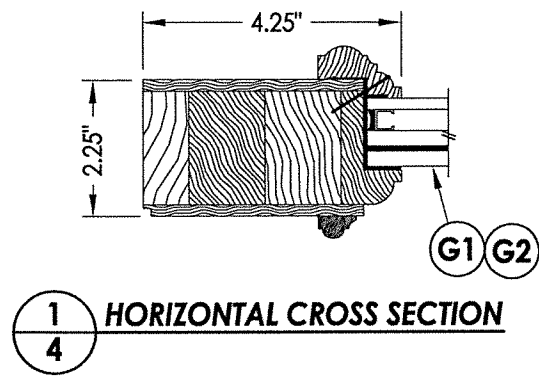


October 12, 2017
 Documents Prepared By:
 Lyndon F. Schmidt
 P.E. No. 43409

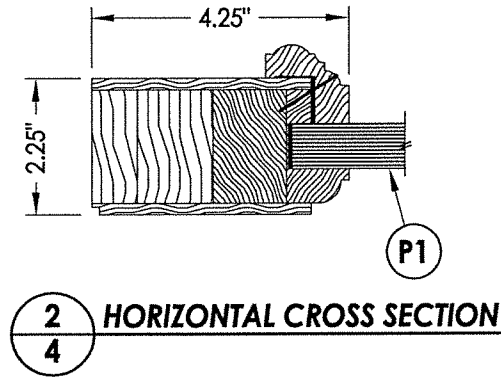
RW BUILDING CONSULTANTS, INC.
 P.O. Box 230, Vairico, FL 33595
 Phone No.: 813.659.9197
 FBPE C.A. No. 9813

PRODUCT:		SOUTHEASTERN SASH & DOOR WOOD DOOR	
PART OR ASSEMBLY:		DOOR PANEL DETAILS	
NO.	DATE	LFS	BY
1	10/12/17	UPDATE TO 6TH ED. (2017)	FBC
REVISIONS			

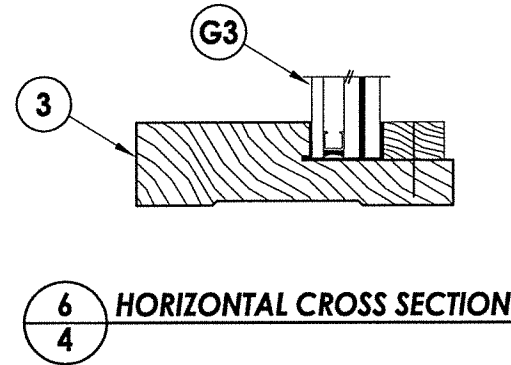
DATE:	3/09/17
SCALE:	N.T.S.
DWG. BY:	JK
CHK. BY:	LFS
DRAWING NO.:	FL-22347.7
SHEET	3 OF 14



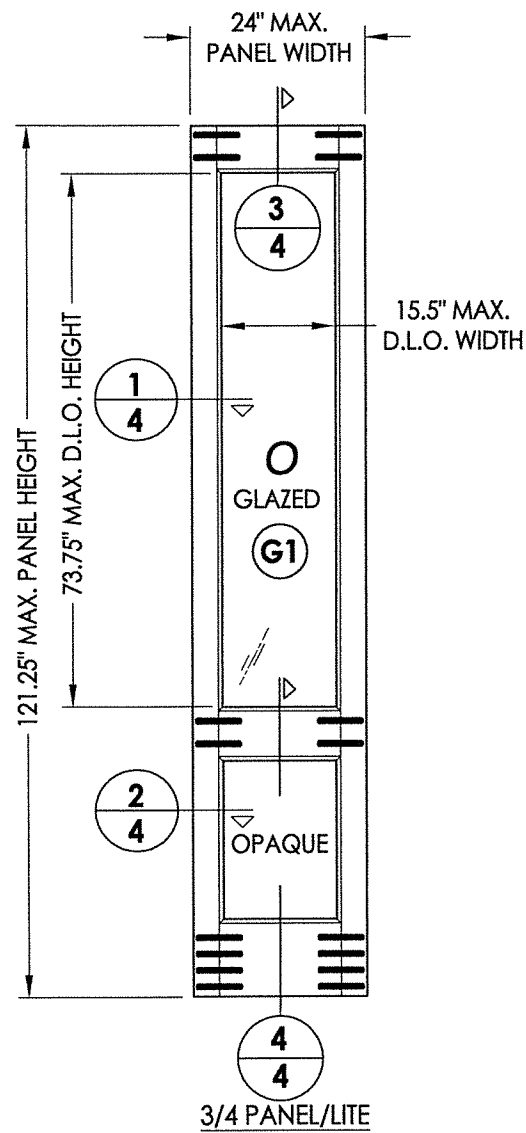
1
4 HORIZONTAL CROSS SECTION



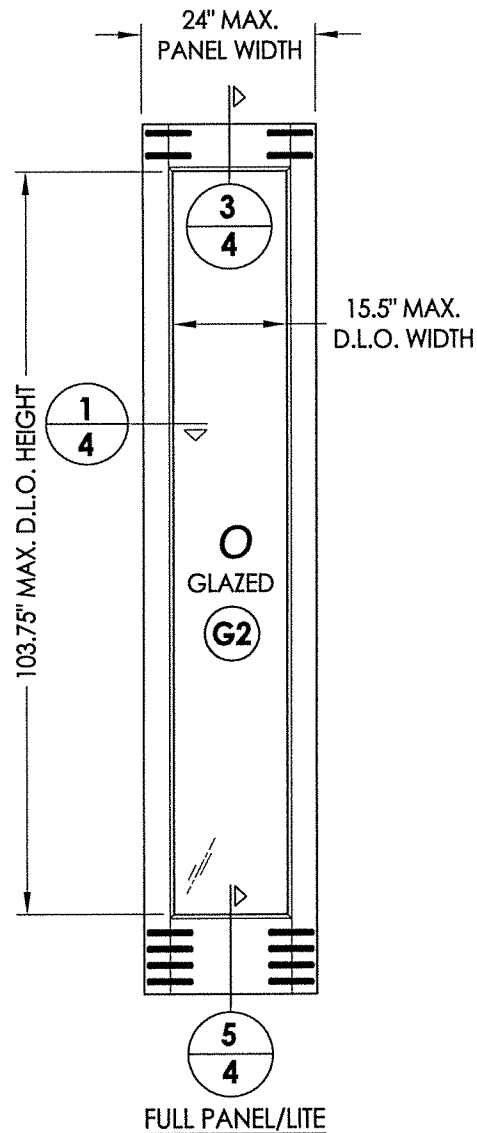
2
4 HORIZONTAL CROSS SECTION



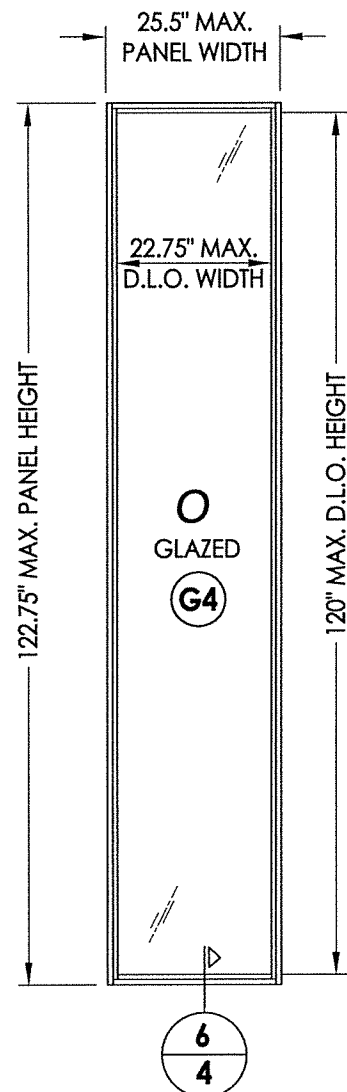
6
4 HORIZONTAL CROSS SECTION



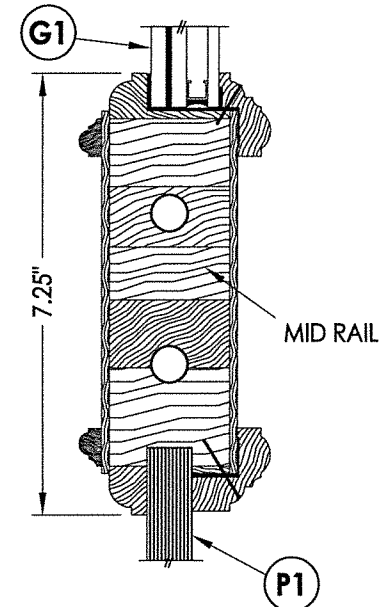
50 WOOD SIDELITE PANEL (2'-0")



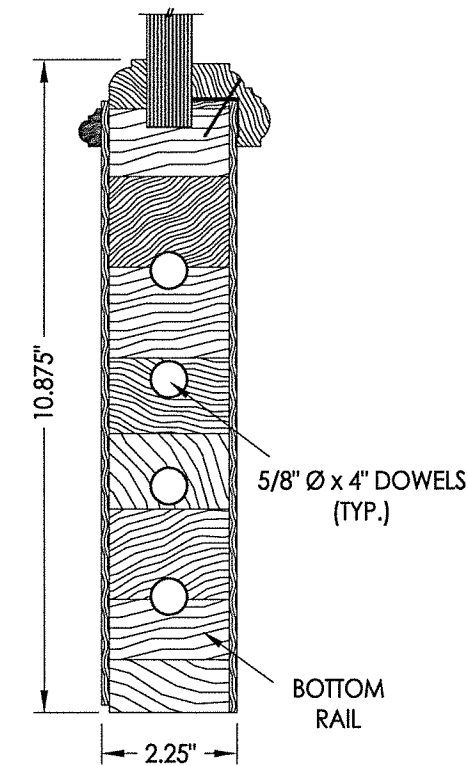
51 WOOD SIDELITE PANEL (2'-0")
DIRECT SET



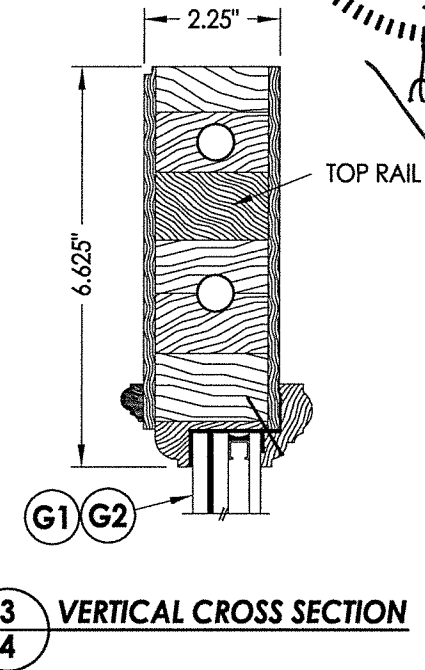
6
4 WOOD SIDELITE PANEL (2'-0")
DIRECT SET



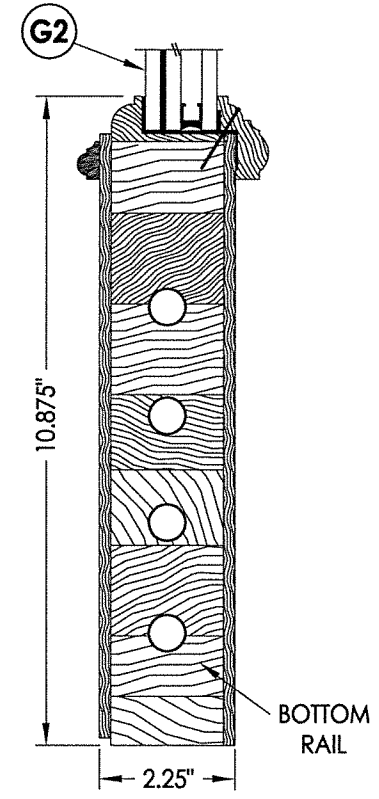
4
4 VERTICAL CROSS SECTION



4
4 VERTICAL CROSS SECTION

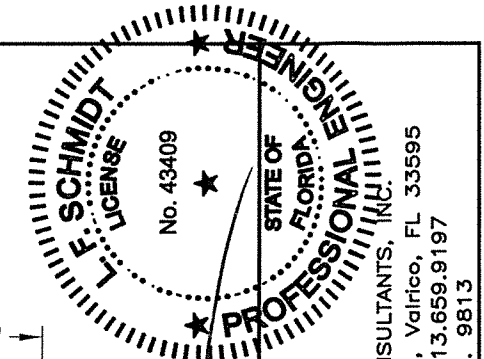


3
4 VERTICAL CROSS SECTION



5
4 VERTICAL CROSS SECTION

WOOD SIDELITE COMPONENTS:
ENGINEERED STAVE CORE: SIPO (UTILE) (G = 0.53)
VENEER/EDGES: CYPRESS (G = 0.42)
NOTE: VENEER/EDGE MAY INCLUDE OAK, CHERRY, WALNUT OR
OTHER OPTIONAL HARDWOOD SPECIES w/ G >= 0.42.



October 12, 2017
Documents Prepared By:
Lyndon F. Schmidt
P.E. No. 43409

RW BUILDING CONSULTANTS, INC.
P.O. Box 230, Valrico, FL 33595
Phone No.: 813.659.9197
FBPE C.A. No. 9813

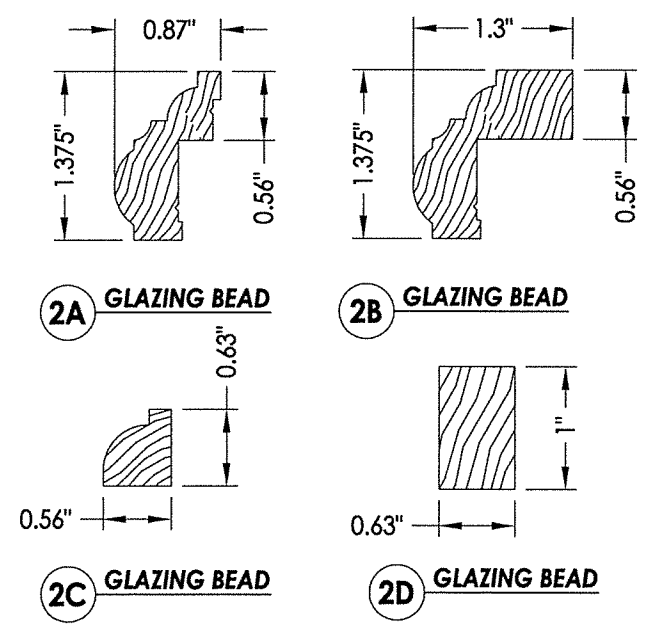
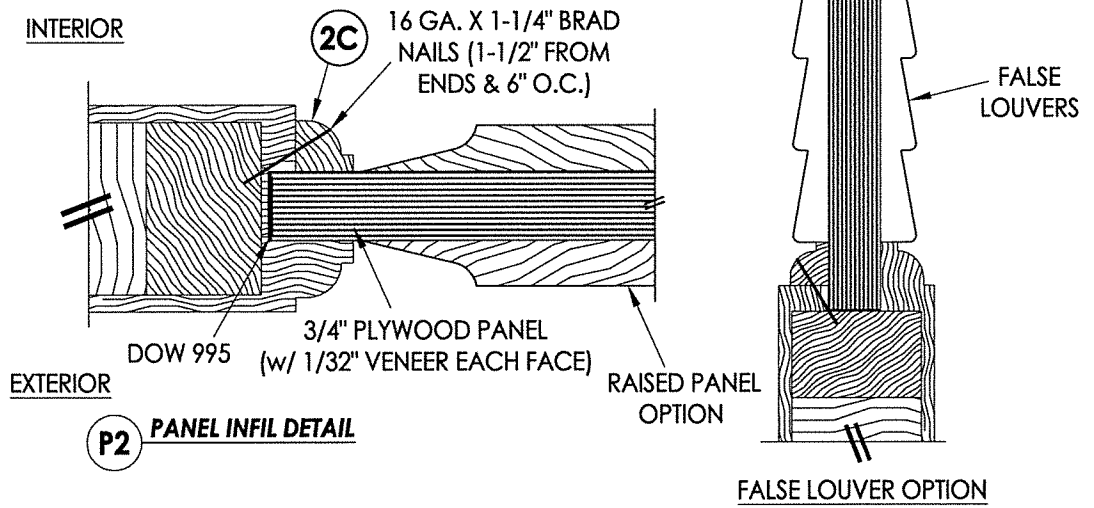
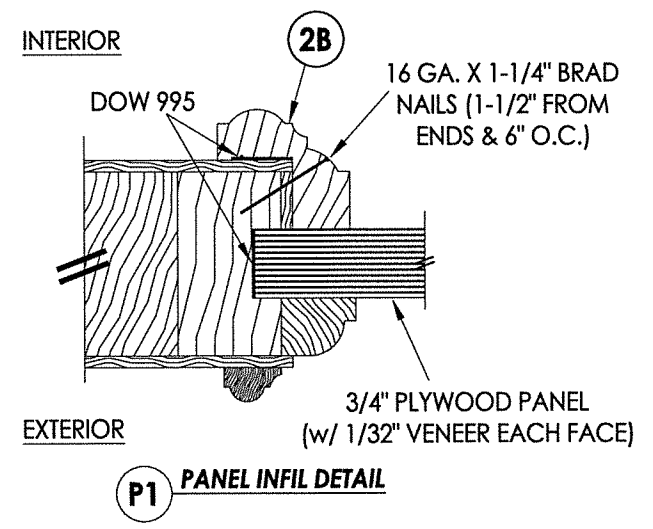
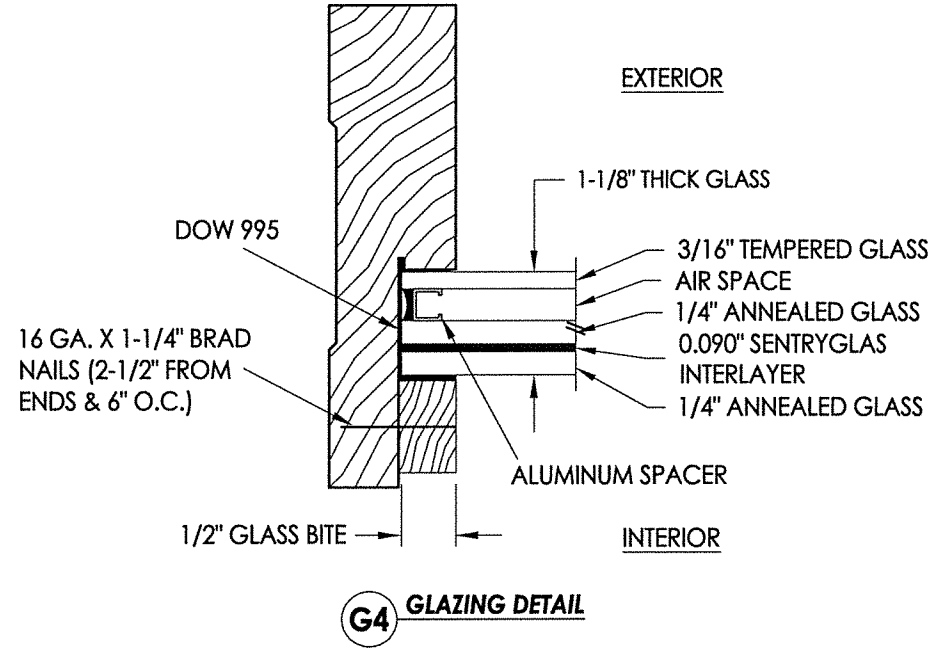
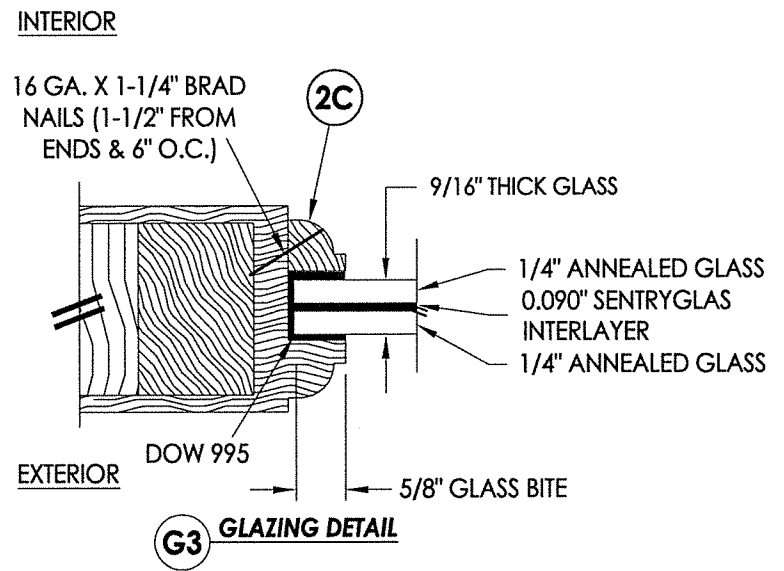
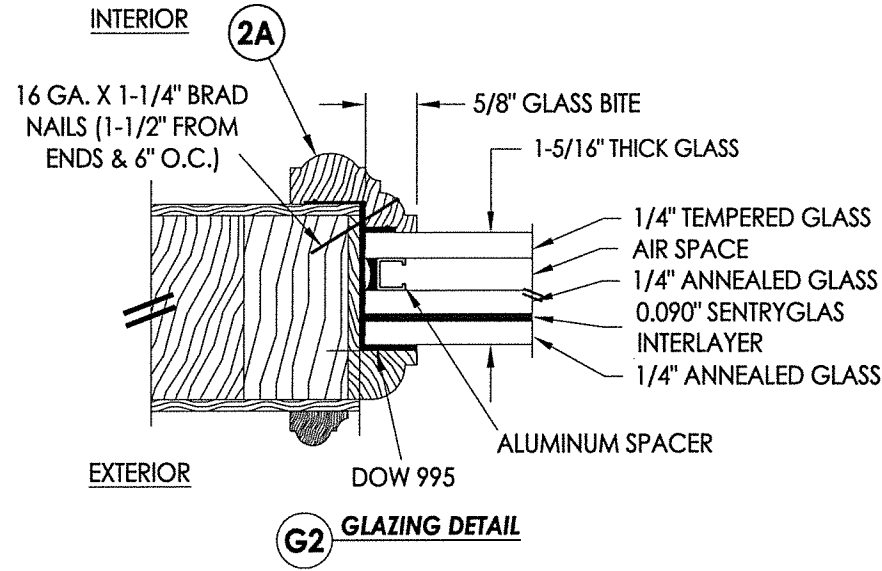
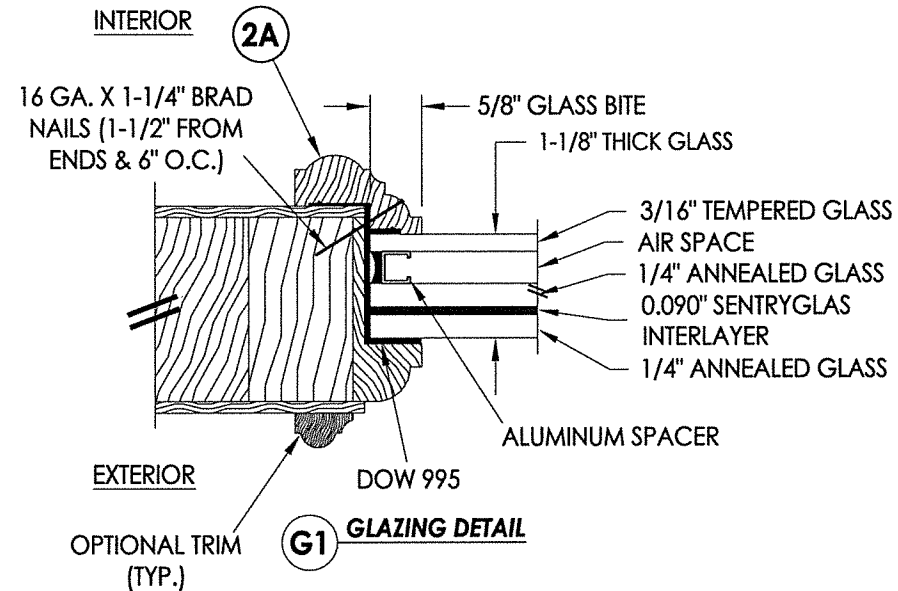
PRODUCT:
SOUTHEASTERN SASH & DOOR
WOOD DOOR

PART OR ASSEMBLY:
SIDELITE PANEL
DETAILS

REVISIONS	
NO.	DATE
1	10/12/17
	UPDATE TO 6TH ED. (2017) FBC
	LFS
	BY

DATE: 5/10/17
SCALE: N.T.S.
DWG. BY: JK
CHK. BY: LFS
DRAWING NO.: FL-22347.7
SHEET 4 OF 14

R:\Clients\Southeastern Sash & Door\A - Florida Product Approvals\FL-22347\C - Drawings\FL 22347 (2017)\FL-22347-6-8.dwg, 5.2



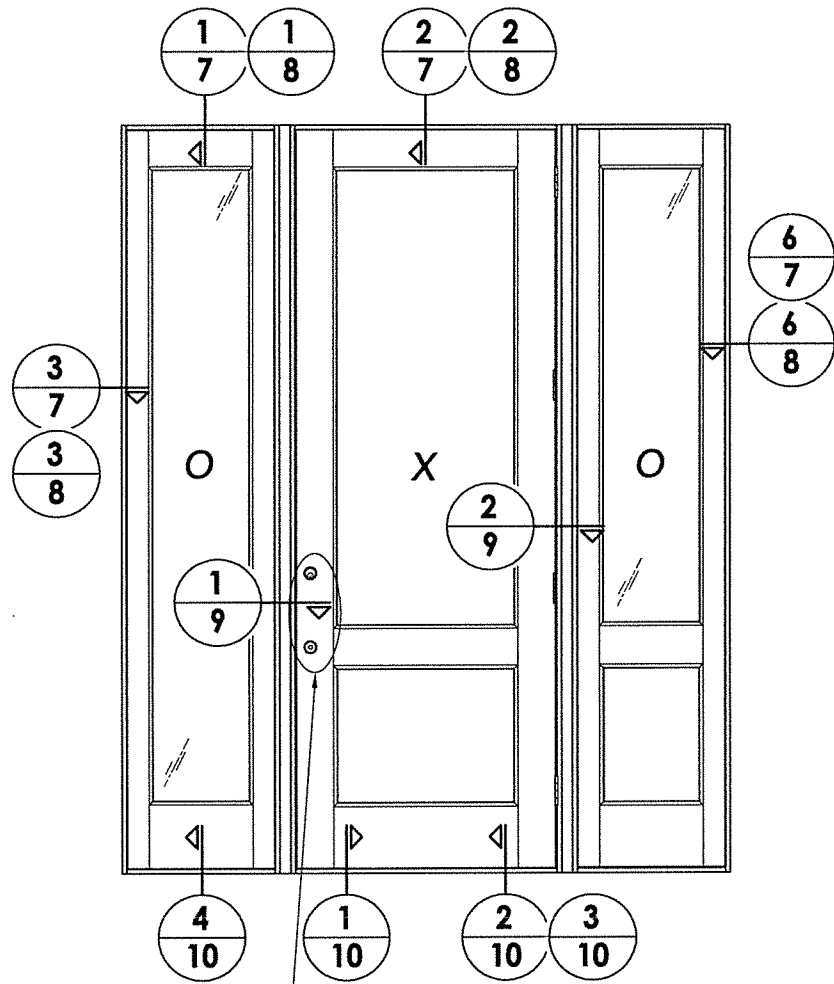
October 12, 2017
 Documents Prepared By:
 Lyndon F. Schmidt
 P.E. No. 43409

R.W. BUILDING CONSULTANTS, INC.
 P.O. Box 230, Vairico, FL 33595
 Phone No.: 813.659.9197
 FBPE C.A. No. 9813

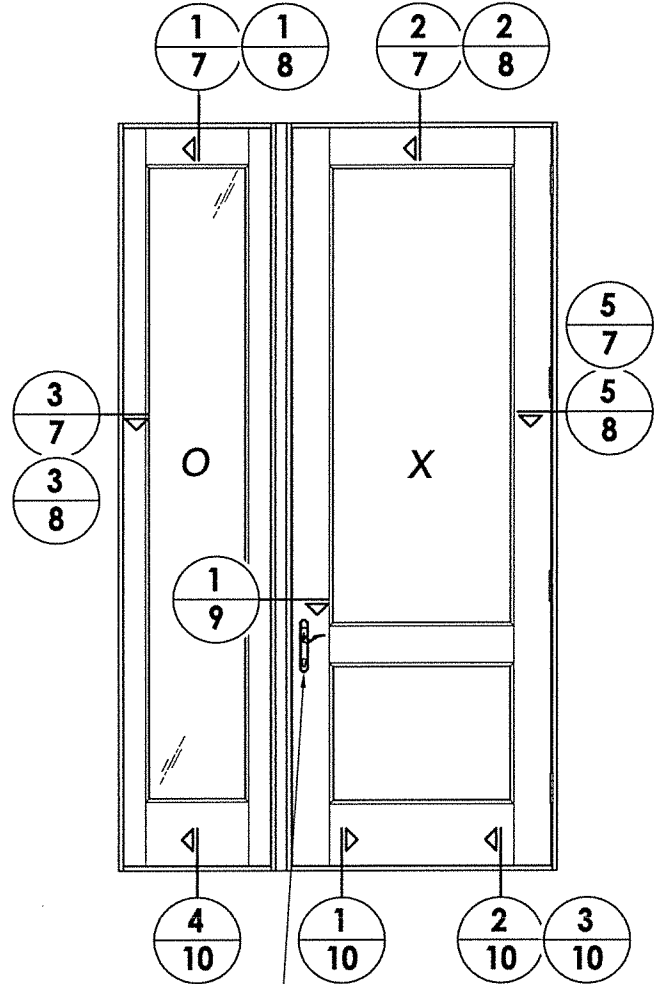
PRODUCT:		SOUTHEASTERN SASH & DOOR WOOD DOOR	
PART OR ASSEMBLY:		GLAZING & PANEL INFIL DETAILS	
NO.	DATE	BY	REVISIONS
1	10/12/17	FBC	UPDATE TO 6TH ED. (2017)
		LFS	
DATE: 5/10/17			
SCALE: N.T.S.			
DWG. BY: JK			
CHK. BY: LFS			
DRAWING NO.: FL-22347.7			
SHEET 5 of 14			

© 2017 R.W. BUILDING CONSULTANTS INC.

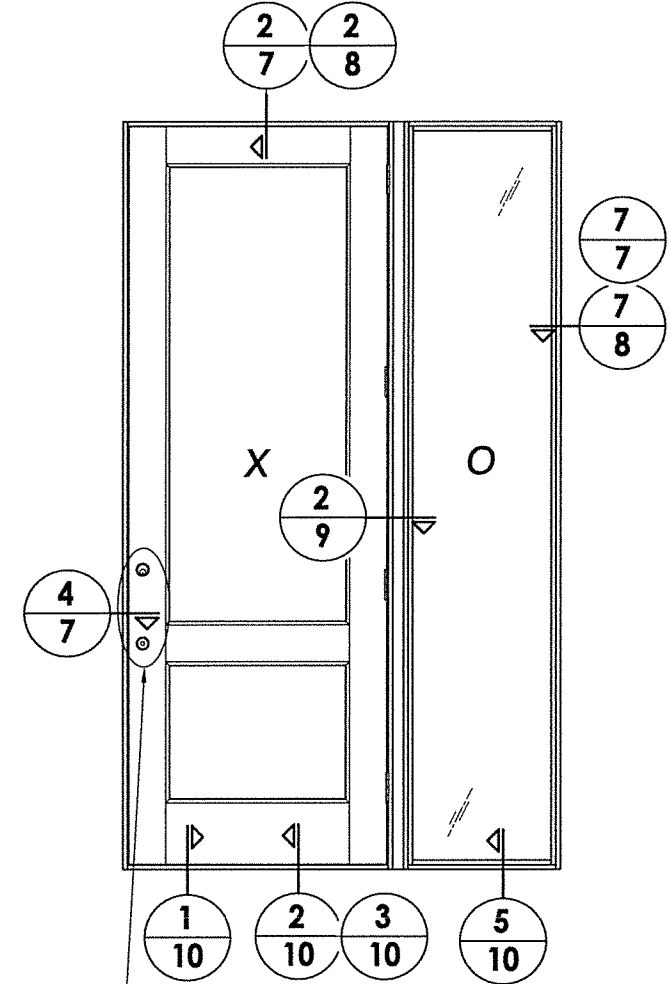
R:\Clients\Southeastern Sash & Door\A - Florida Product Approvals\FL-22347\C - Drawings\FL-22347\FL-22347.6-8.dwg, 6.2



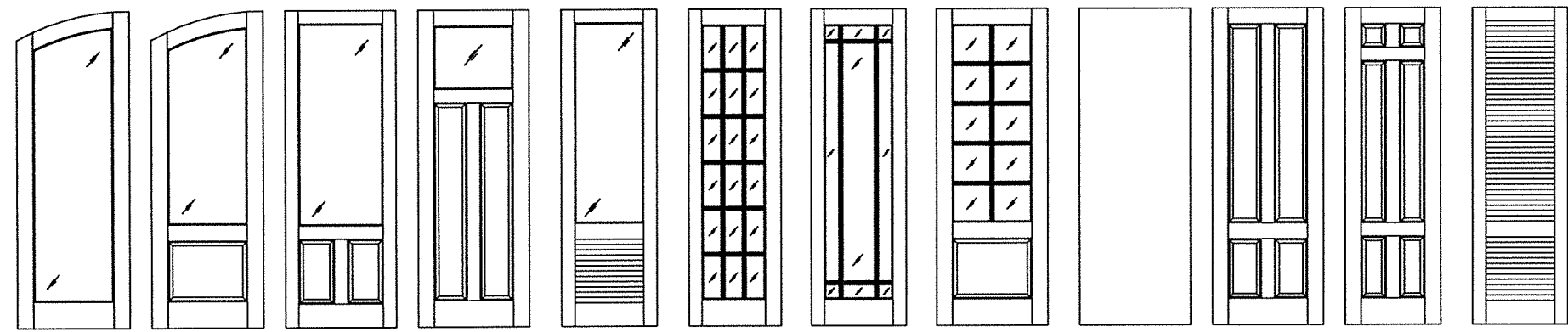
SEE HARDWARE CHART



SEE HARDWARE CHART



SEE HARDWARE CHART



SOUTHEASTERN SASH & DOOR Door Panel Options
 Panel options shown are for illustration and are representative only.
 Surface applied muntins are used for simulated divided lites shown.

HARDWARE TABLE	
MANUFACTURER	MODEL
HOPPE	MULTIPOINT HARDWARE: HLS 9000 SERIES MULTIPOINT LOCK ROUNDBOLT/SHOOTBOLT (5-PT.)
KWIKSET	KNOB: SIGNATURE SERIES DEADBOLT: SIGNATURE SERIES (980)

October 12, 2017
 Documents Prepared By:
 Lyndon F. Schmidt
 P.E. No. 43409

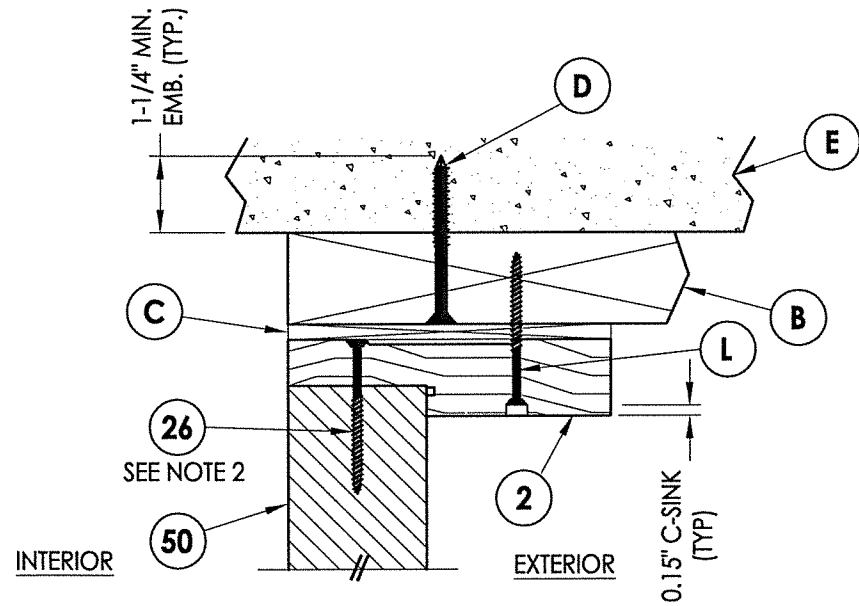
RW BUILDING CONSULTANTS, INC.
 P.O. Box 230, Vairico, FL 33595
 Phone No.: 813.659.9197
 FBPE C.A. No. 9813

PRODUCT: SOUTHEASTERN SASH & DOOR WOOD DOOR		PART OR ASSEMBLY: ELEVATIONS	
DATE	NO.	DATE	BY
5/10/17	1	10/12/17	LFS
SCALE: N.T.S.		UPDATE TO 6TH ED. (2017) FBC	
DWG. BY: JK		REVISIONS	
CHK. BY: LFS			
DRAWING NO.: FL-22347.7			
SHEET 6 OF 14			

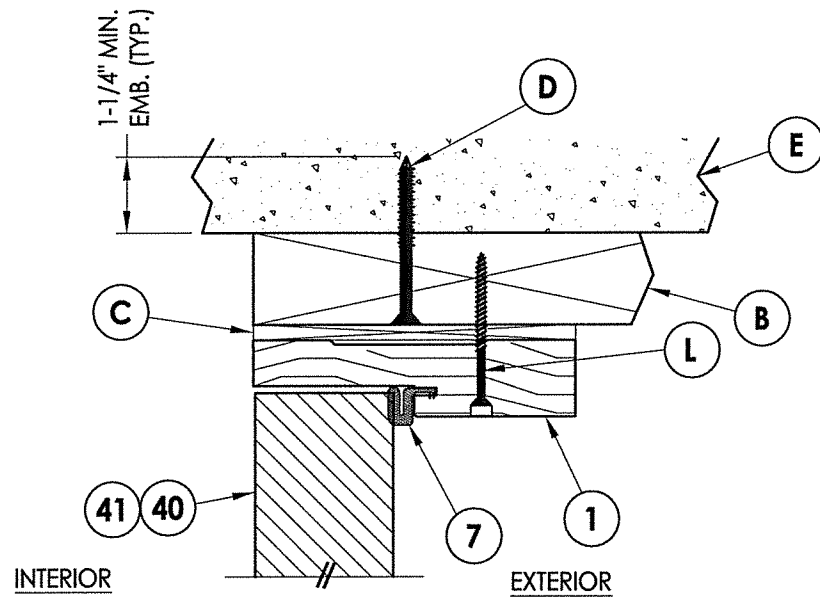
R:\Clients\Southeastern Sash & Door\A - Florida Product Approvals\FL-22347C - Drawings\FL 22347 (2017)\FL-22347-6-8.dwg, 7.2

NOTES:

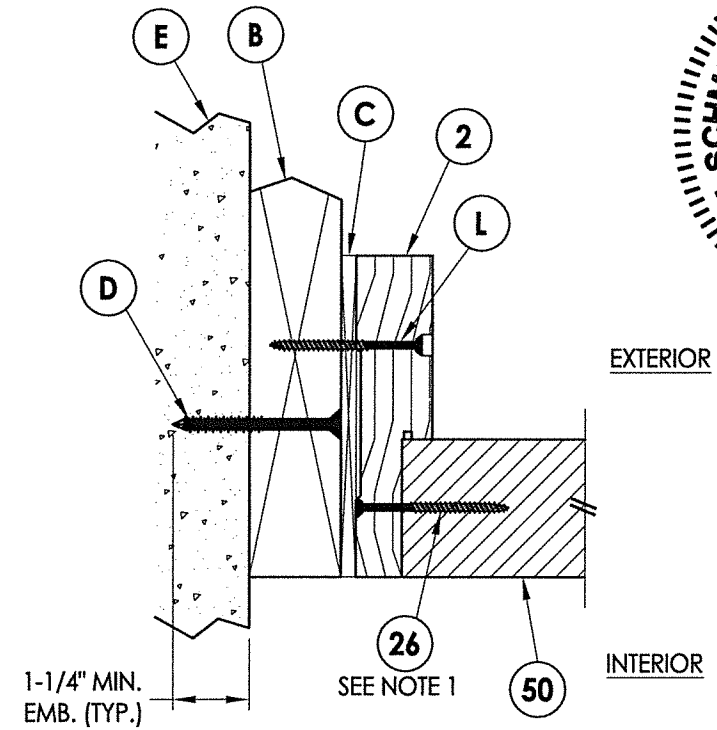
- Item #26 located 4" from each end & 9 more equally spaced (11 total).
- Item #26 located 4" from each end & 1 at the center line (3 total).



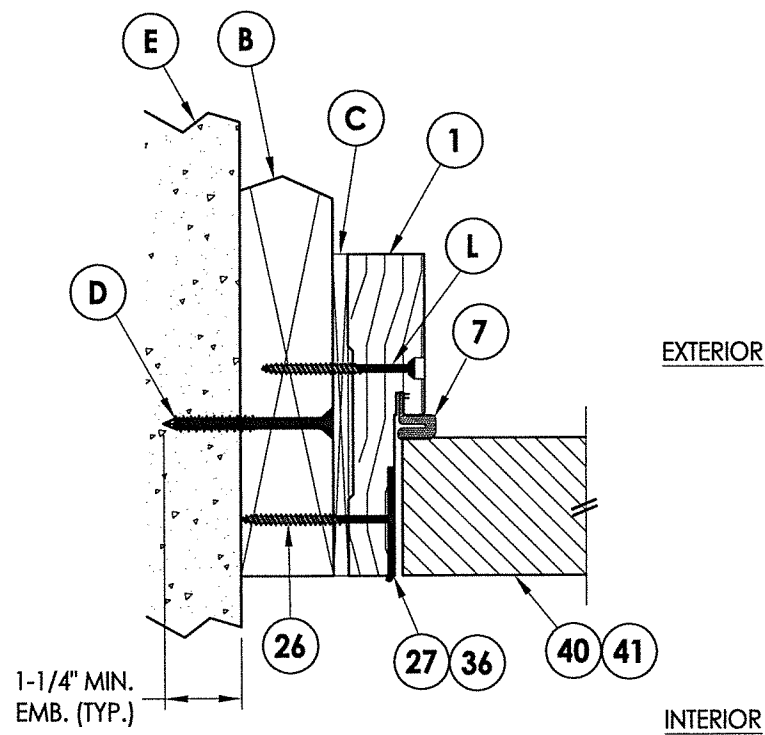
1 **VERTICAL CROSS SECTION**
7 Shown w/ 2X Buck
 Inswing shown (Outswing similar)



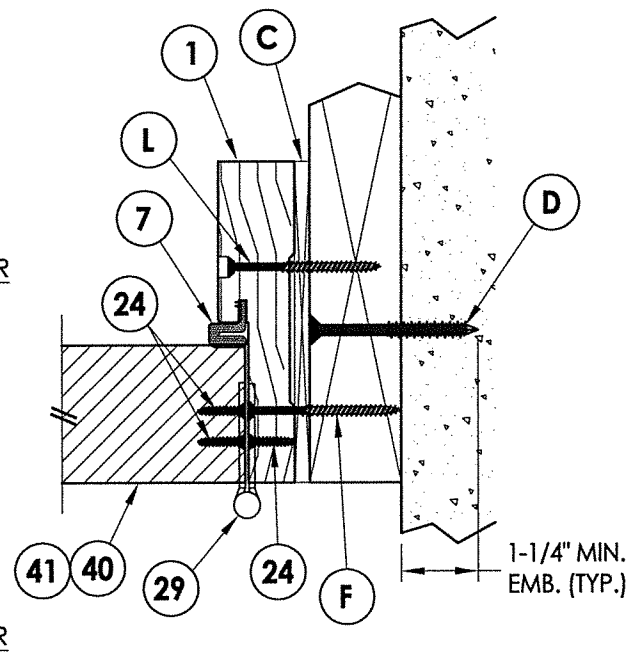
2 **VERTICAL CROSS SECTION**
7 Shown w/ 2X Buck
 Inswing shown (Outswing similar)



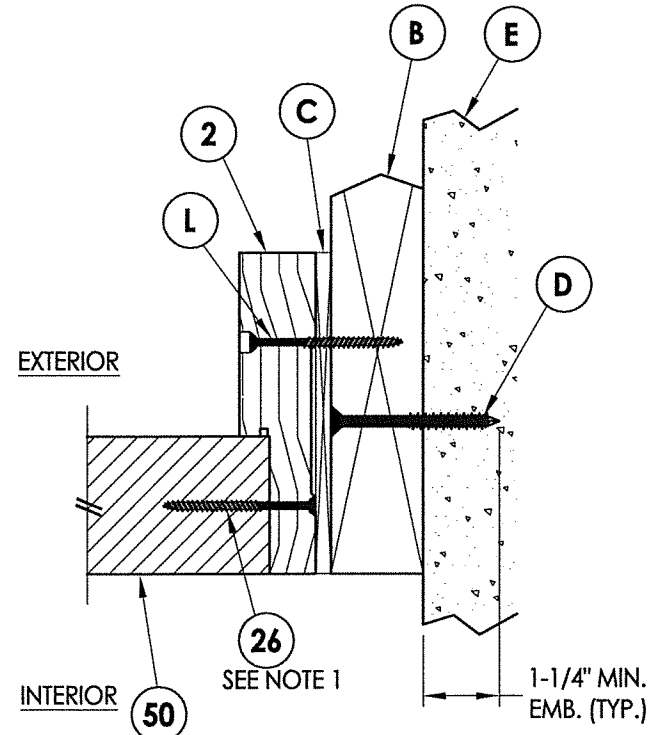
3 **HORIZONTAL CROSS SECTION**
7 Shown w/ 2X Buck
 Inswing shown (Outswing similar)



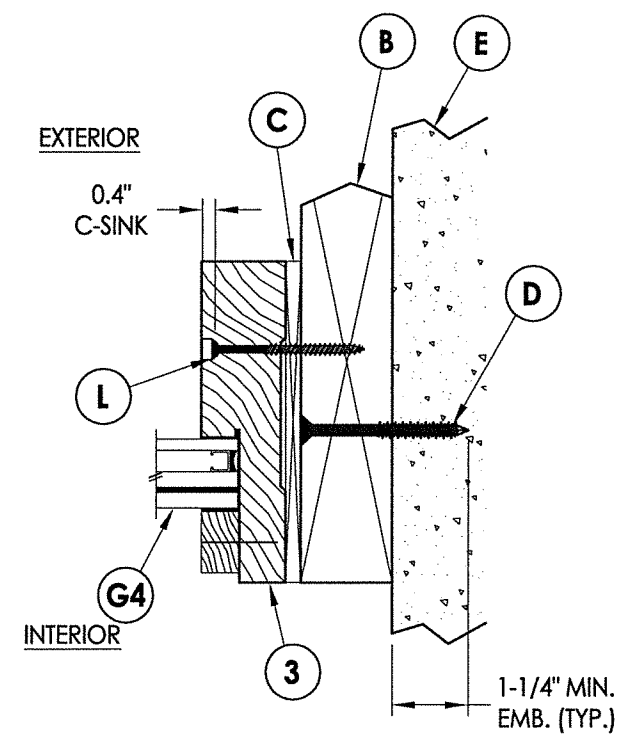
4 **HORIZONTAL CROSS SECTION**
7 Shown w/ 2X Buck
 Inswing shown (Outswing similar)



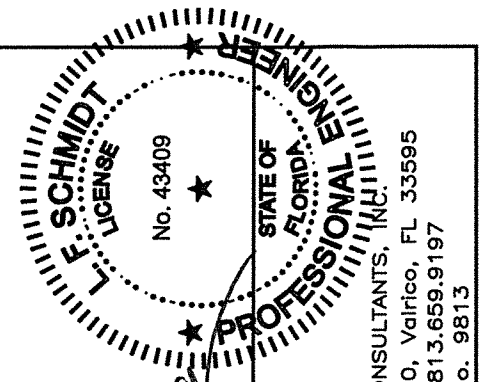
5 **HORIZONTAL CROSS SECTION**
7 Shown w/ 2X Buck
 Inswing shown (Outswing similar)



6 **HORIZONTAL CROSS SECTION**
7 Shown w/ 2X Buck
 Inswing shown (Outswing similar)



7 **HORIZONTAL CROSS SECTION**
7 Shown w/ 2X Buck
 Inswing shown (Outswing similar)



October 12, 2017
 Documents Prepared By:
 Lyndon F. Schmidt
 P.E. No. 43409
 R.W. BUILDING CONSULTANTS, INC.
 P.O. Box 230, Vairico, FL 33595
 Phone No.: 813.659.9197
 FBPE C.A. No. 9813

PRODUCT:
 SOUTHEASTERN SASH & DOOR
 WOOD DOOR
 PART OR ASSEMBLY:
 HORIZONTAL & VERTICAL
 CROSS SECTIONS (2X BUCK)

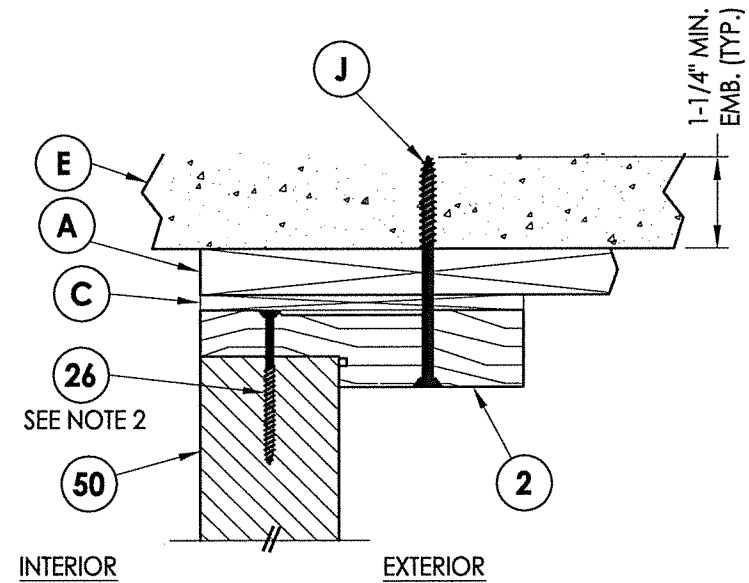
NO.	DATE	BY	REVISIONS
1	10/12/17	LFS	UPDATE TO 6TH ED. (2017) FBC

DATE: 5/10/17
 SCALE: N.T.S.
 DWG. BY: JK
 CHK. BY: LFS
 DRAWING NO.: FL-22347.7
 SHEET 7 OF 14

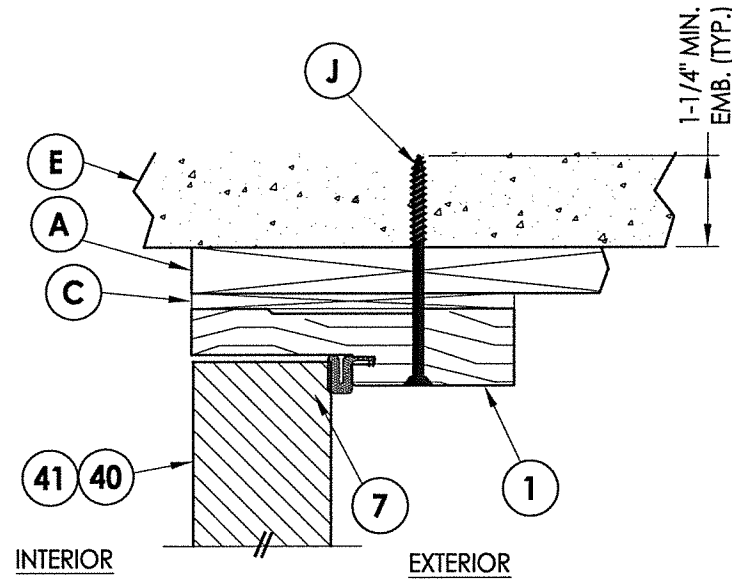
R:\Clients\Southeastern Sash & Door\A - Florida Product Approvals\FL-22347\C - Drawings\FL 22347 (2017)\FL-22347.6-8.dwg, 8.2

NOTES:

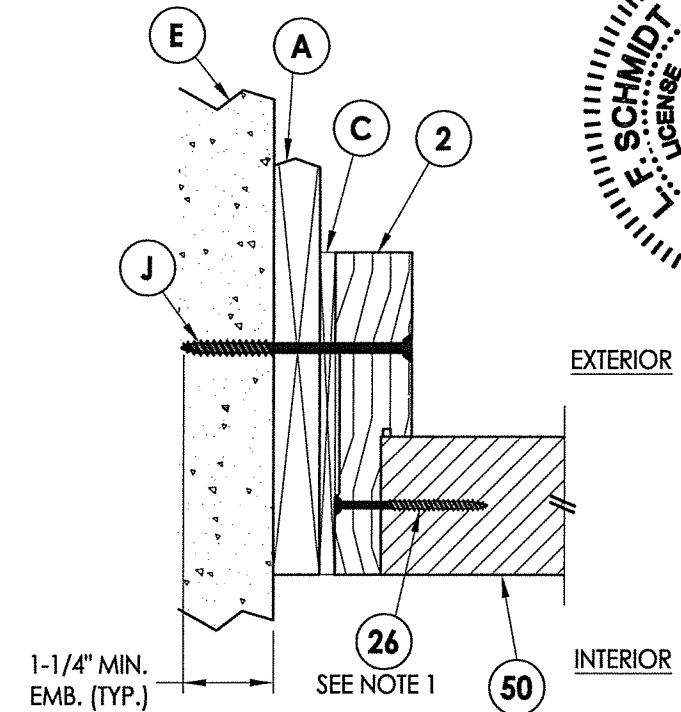
- Item #22 located 4" from each end & 9 more equally spaced (11 total).
- Item #22 located 4" from each end & 1 at the center line (3 total).



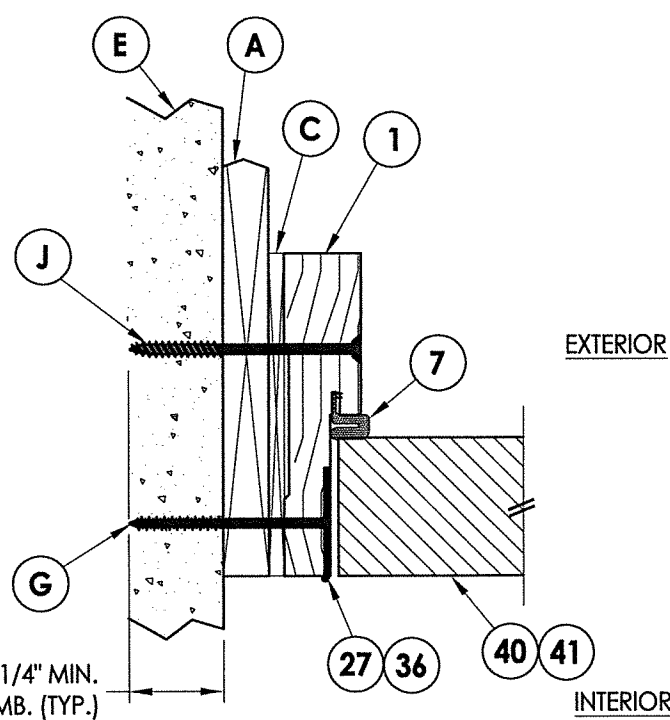
1 **VERTICAL CROSS SECTION**
8 Shown w/ 1X Buck
 Inswing shown (Outswing similar)



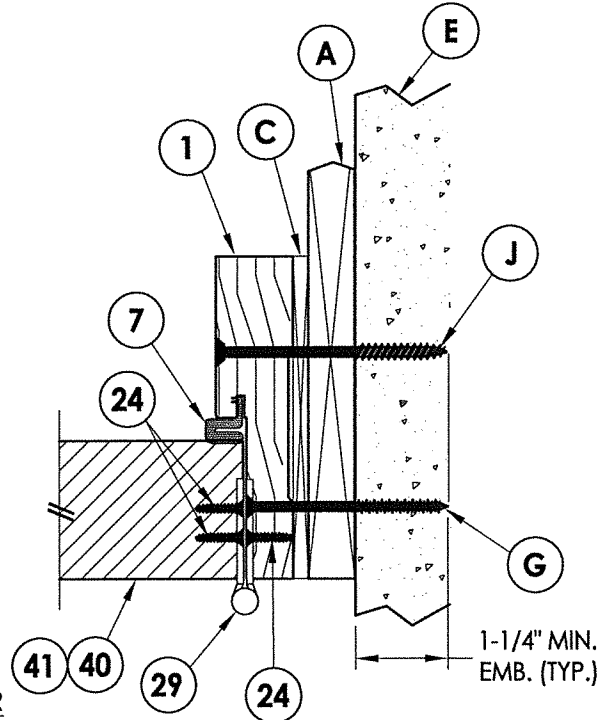
2 **VERTICAL CROSS SECTION**
8 Shown w/ 1X Buck
 Inswing shown (Outswing similar)



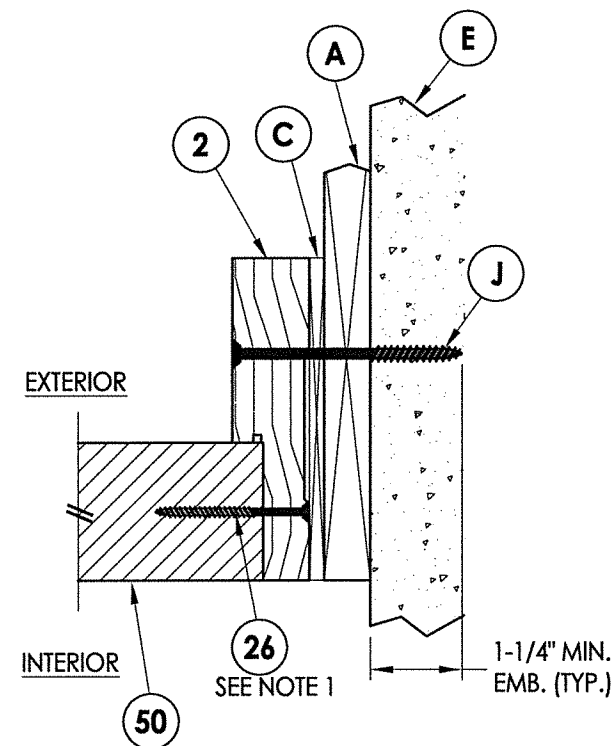
3 **HORIZONTAL CROSS SECTION**
8 Shown w/ 1X Buck
 Inswing shown (Outswing similar)



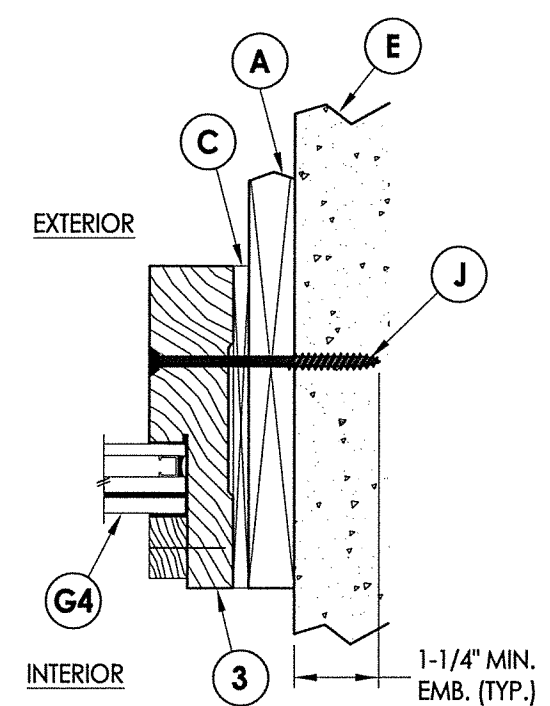
4 **HORIZONTAL CROSS SECTION**
8 Shown w/ 1X Buck
 Inswing shown (Outswing similar)



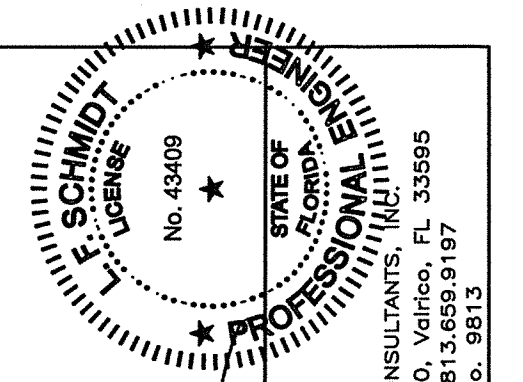
5 **HORIZONTAL CROSS SECTION**
8 Shown w/ 1X Buck
 Inswing shown (Outswing similar)



6 **HORIZONTAL CROSS SECTION**
8 Shown w/ 1X Buck
 Inswing shown (Outswing similar)



7 **HORIZONTAL CROSS SECTION**
8 Shown w/ 1X Buck
 Inswing shown (Outswing similar)

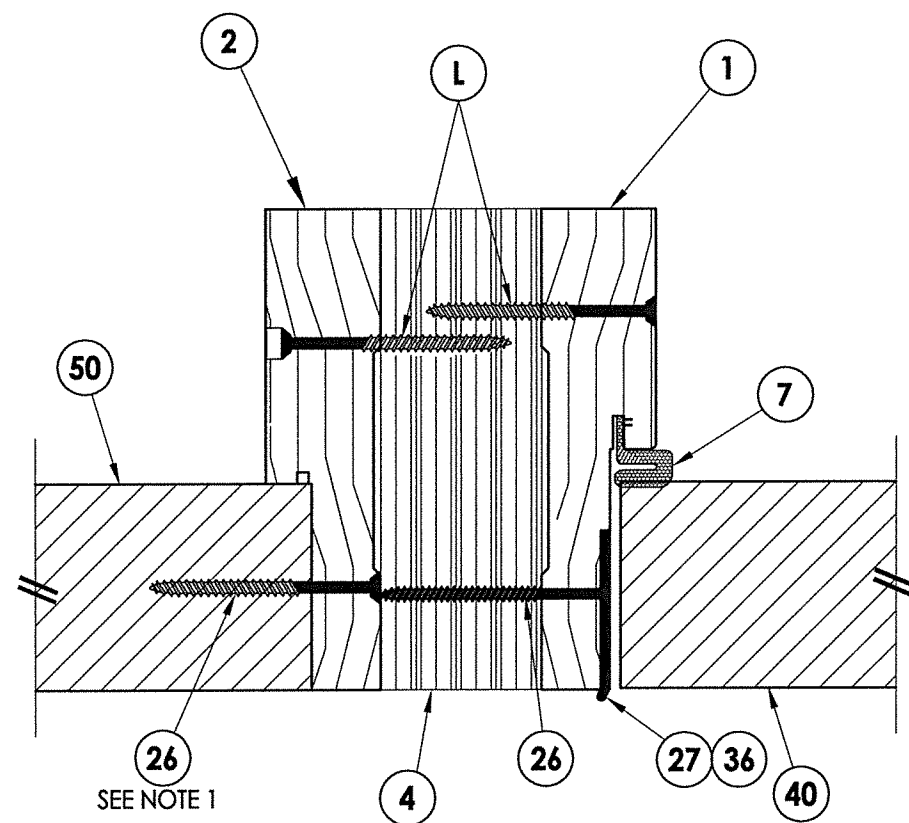


October 12, 2017
 Documents Prepared By:
 Lyndon F. Schmidt
 P.E. No. 43409
 R.W. BUILDING CONSULTANTS, INC.
 P.O. Box 230, Valrico, FL 33595
 Phone No.: 813.659.9197
 FBPE C.A. No. 9813

PRODUCT:		SOUTHEASTERN SASH & DOOR WOOD DOOR	
PART OR ASSEMBLY:		HORIZONTAL & VERTICAL CROSS SECTIONS (1X BUCK)	
DATE:	5/10/17	NO.	DATE
SCALE:	N.T.S.	BY	LFS
DWG. BY:	JK	REVISIONS	
CHK. BY:	LFS	1	10/12/17 UPDATE TO 6TH ED. (2017) FBC
DRAWING NO.:	FL-22347.7		
SHEET	8	OF	14

NOTES:

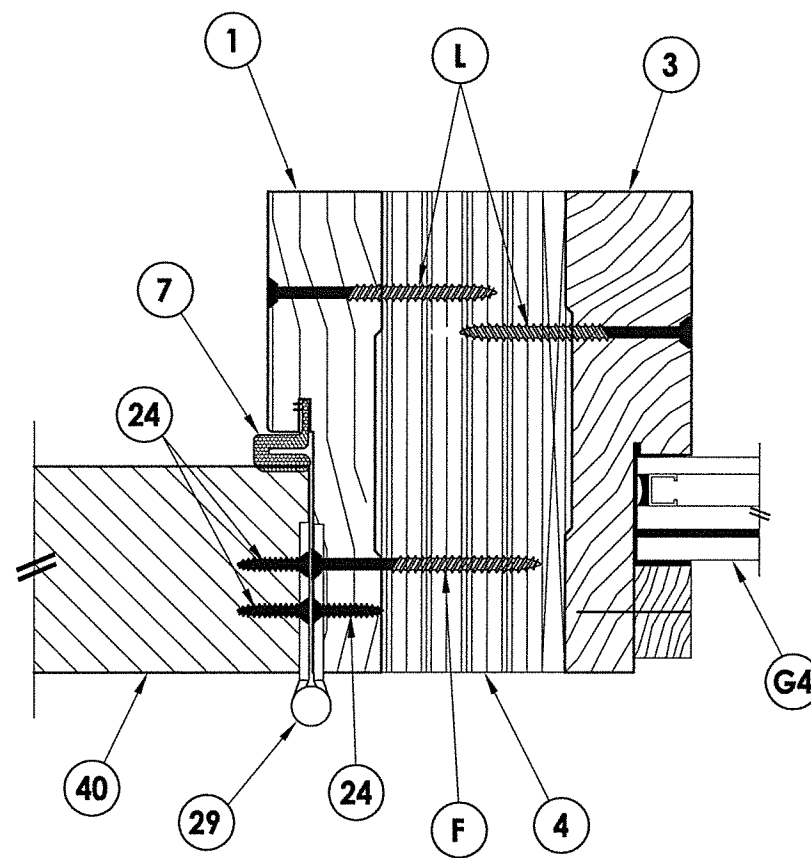
1. Item #26 located 4" from each end & 9 more equally spaced (11 total).



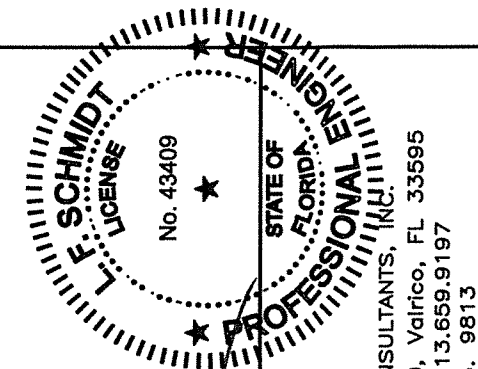
1 HORIZONTAL CROSS SECTION
9 Inswing shown (Outswing similar)

EXTERIOR

INTERIOR



2 HORIZONTAL CROSS SECTION
9 Inswing shown (Outswing similar)

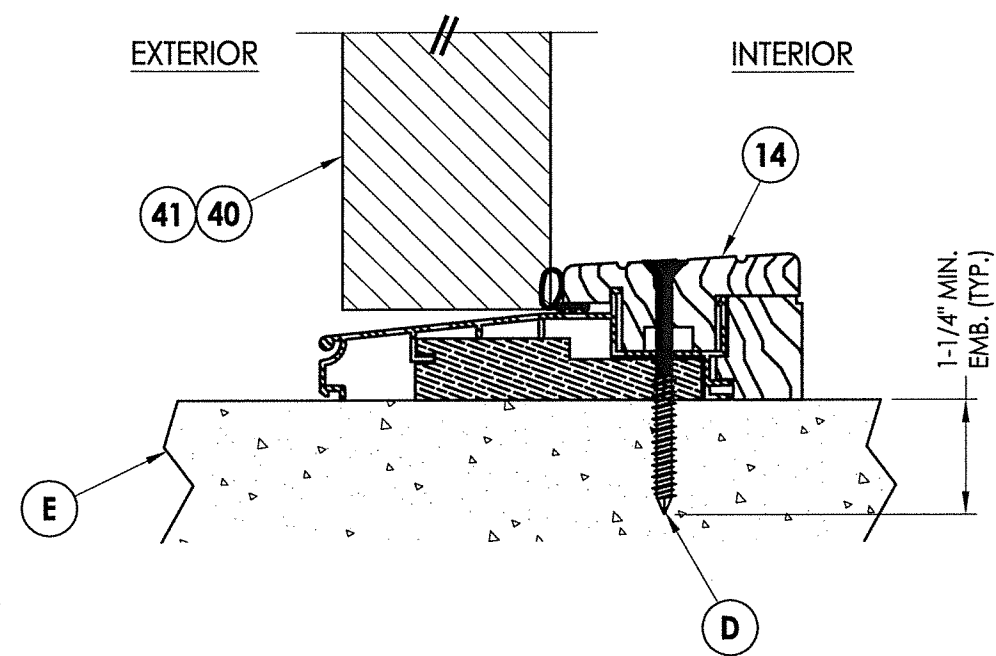


October 12, 2017
 Documents Prepared By:
 Lyndon F. Schmidt
 P.E. No. 43409
 RW BUILDING CONSULTANTS, INC.
 P.O. Box 230, Valrico, FL 33595
 Phone No.: 813.659.9197
 FBPE C.A. No. 9813

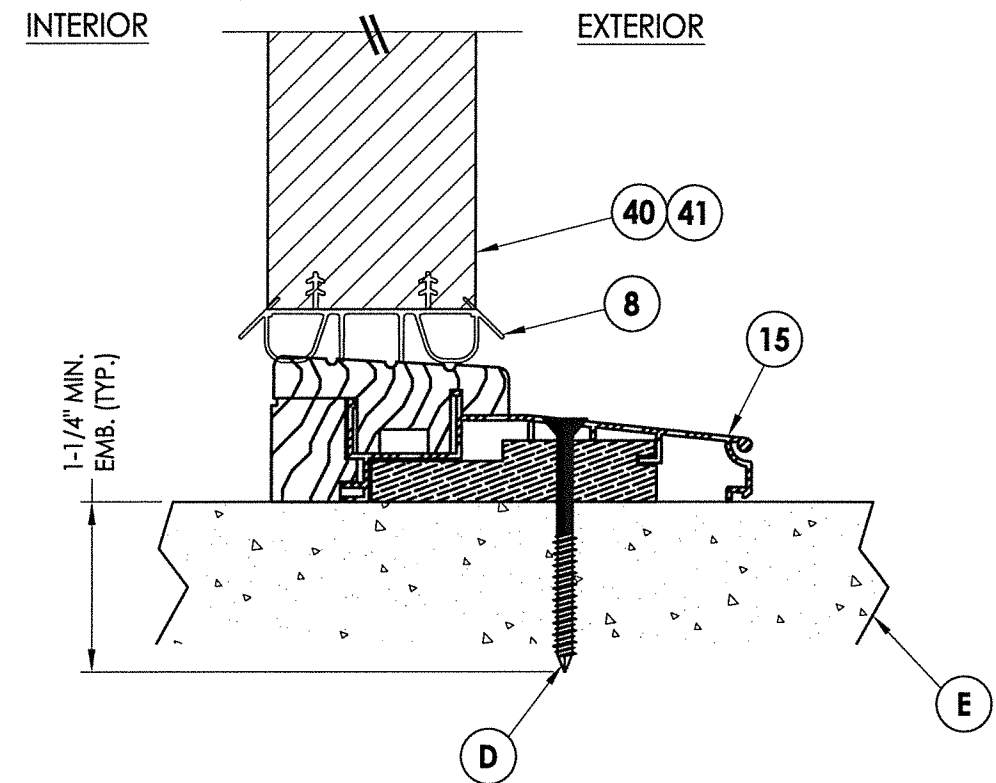
PRODUCT: SOUTHEASTERN SASH & DOOR WOOD DOOR		PART OR ASSEMBLY: HORIZONTAL CROSS SECTIONS	
NO.	DATE	BY	REVISIONS
1	10/12/17	LFS	UPDATE TO 6TH ED. (2017) FBC
DATE: 5/10/17		SCALE: N.T.S.	
DWG. BY: JK		CHK. BY: LFS	
DRAWING NO.: FL-22347.7		SHEET 9 OF 14	

R:\Clients\Southeastern Sash & Door\A - Florida Product Approvals\FL-22347C - Drawings\FL 22347 (2017)\FL-22347.6-8.dwg, 10.2

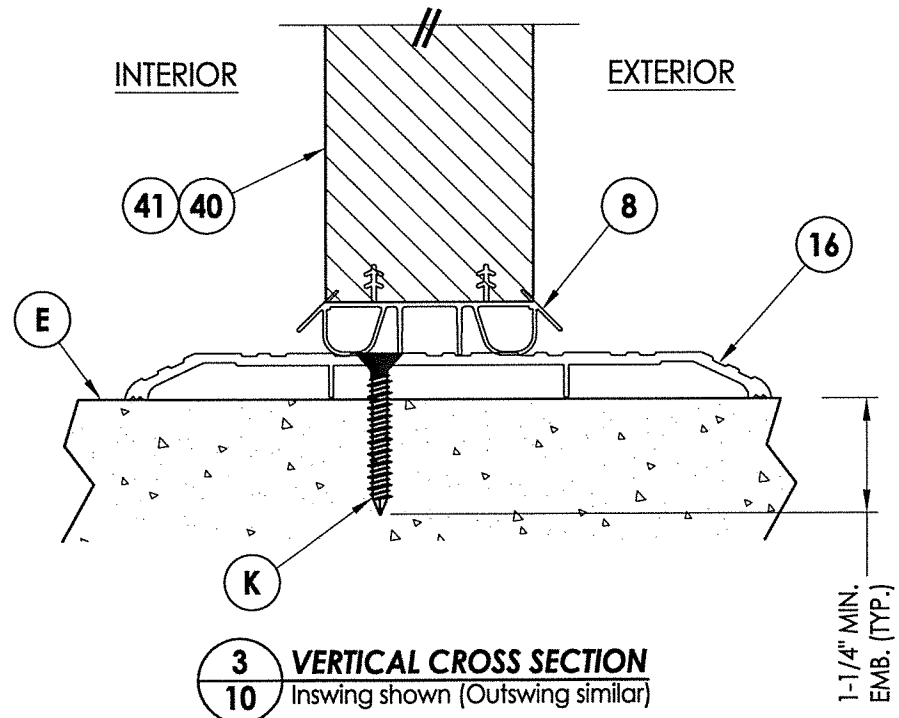
NOTES:
 1. Item #26 located 4" from each end & 1 at the center line (3 total).



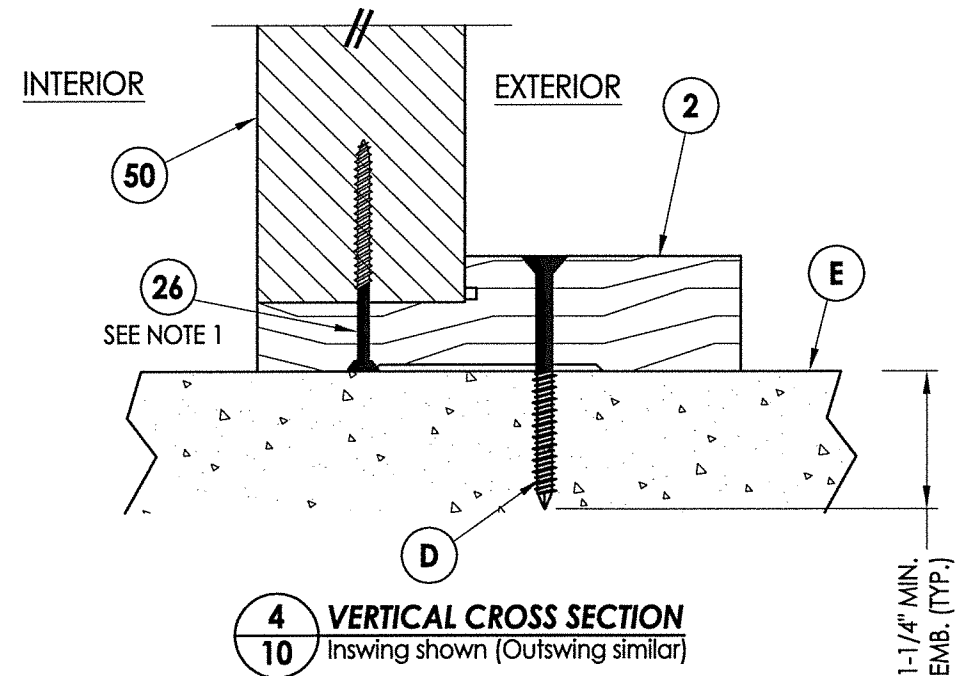
1 VERTICAL CROSS SECTION
10 Outswing



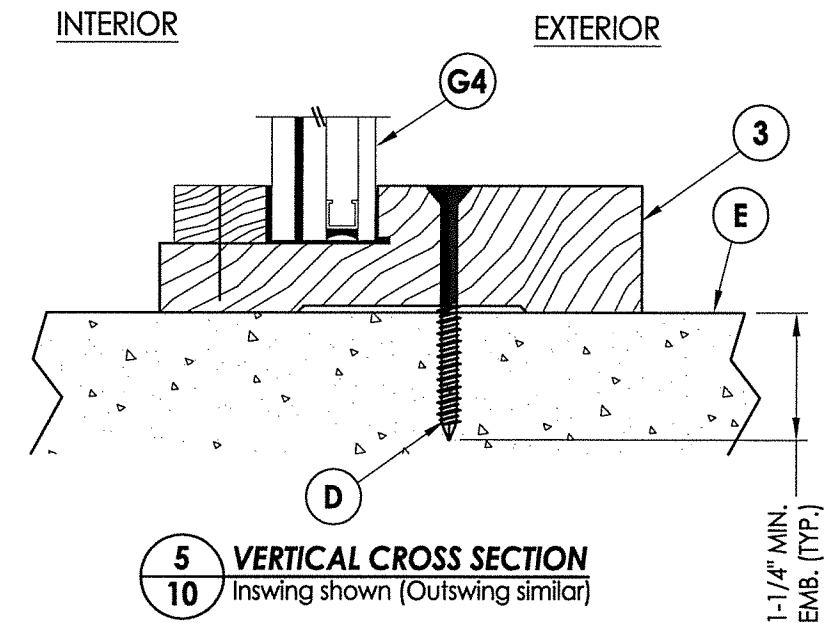
2 VERTICAL CROSS SECTION
10 Inswing



3 VERTICAL CROSS SECTION
10 Inswing shown (Outswing similar)



4 VERTICAL CROSS SECTION
10 Inswing shown (Outswing similar)



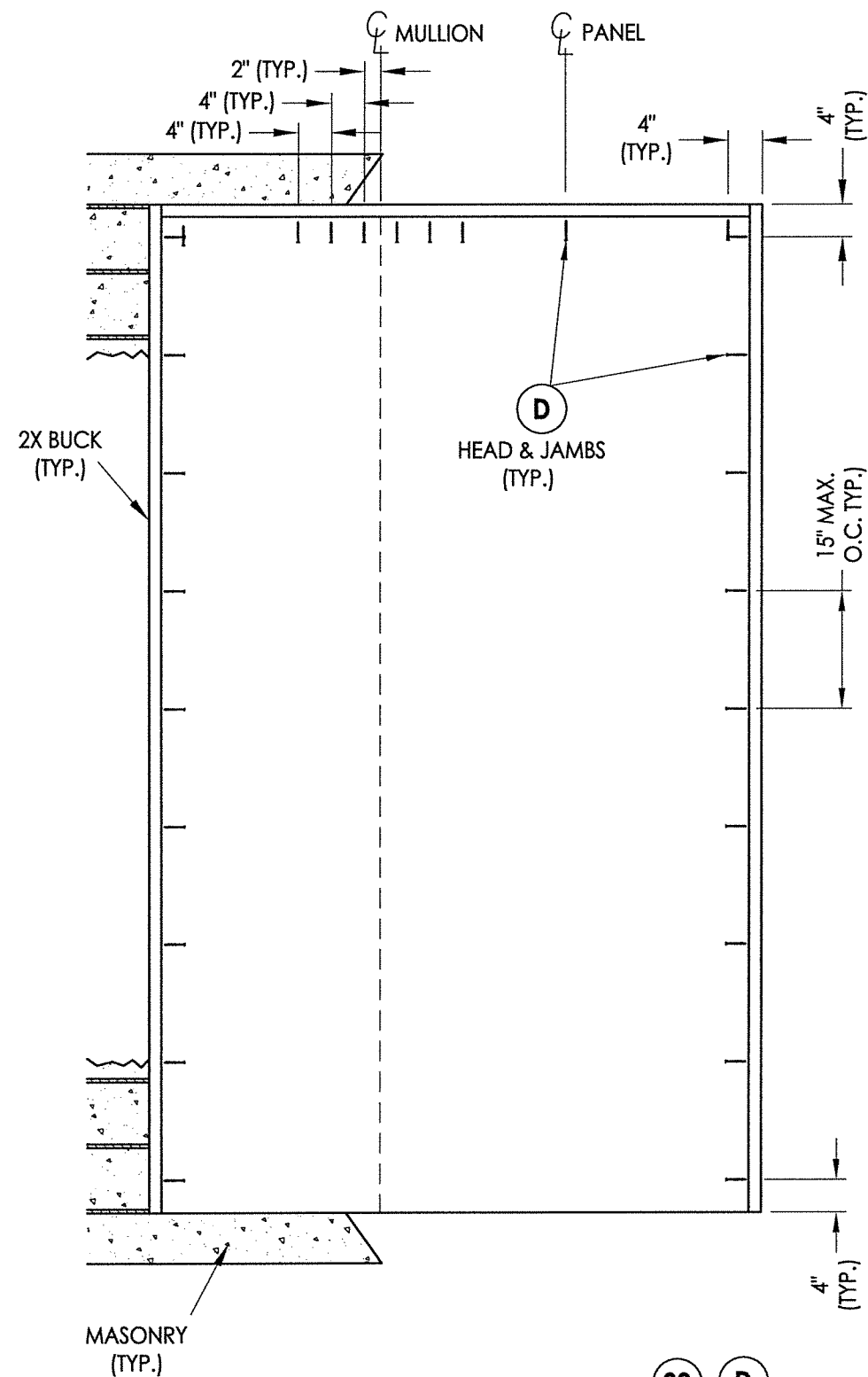
5 VERTICAL CROSS SECTION
10 Inswing shown (Outswing similar)

October 12, 2017
 Documents Prepared By:
 Lyndon F. Schmidt
 P.E. No. 43409

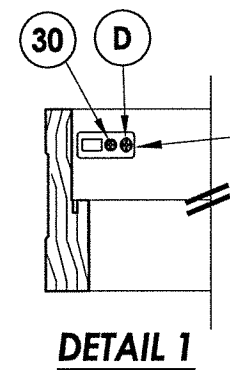
L. F. SCHMIDT
 LICENSE
 No. 43409
 STATE OF
 FLORIDA
 PROFESSIONAL ENGINEER

RW BUILDING CONSULTANTS, INC.
 P.O. Box 230, Valrico, FL 33595
 Phone No.: 813.659.9197
 FBPE C.A. No. 9813

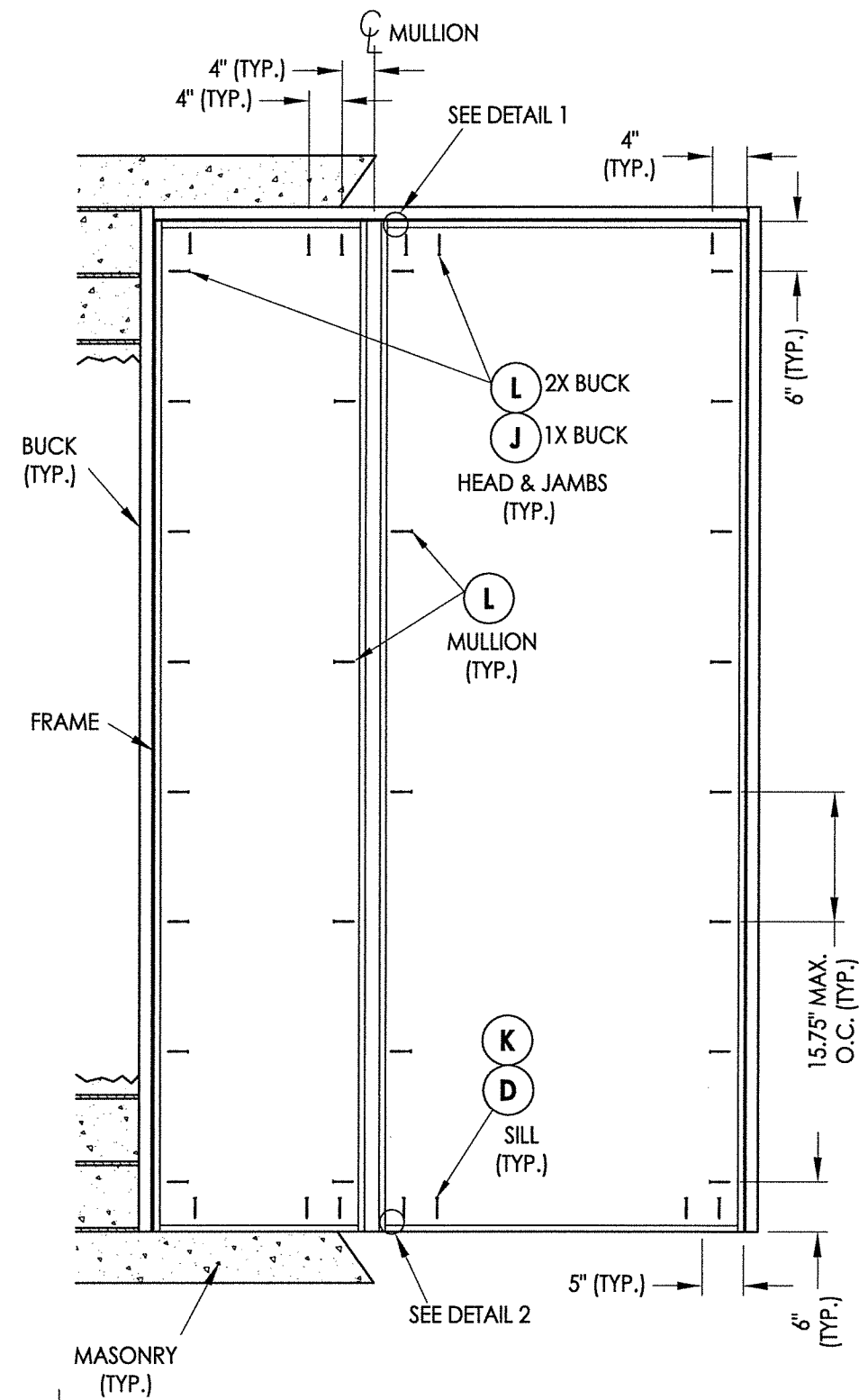
PRODUCT:	SOUTHEASTERN SASH & DOOR WOOD DOOR	
PART OR ASSEMBLY:	VERTICAL CROSS SECTIONS (THRESHOLD)	
DATE:	5/10/17	
SCALE:	N.T.S.	
DWG. BY:	JK	
CHK. BY:	LFS	
DRAWING NO.:	FL-22347.7	
SHEET	10 OF 14	
NO.	DATE	REVISIONS
1	10/12/17	UPDATE TO 6TH ED. (2017) FBC
		LFS
		BY



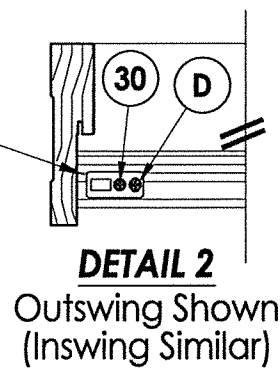
2X BUCK ANCHORING
OX Shown (XO - Similar)



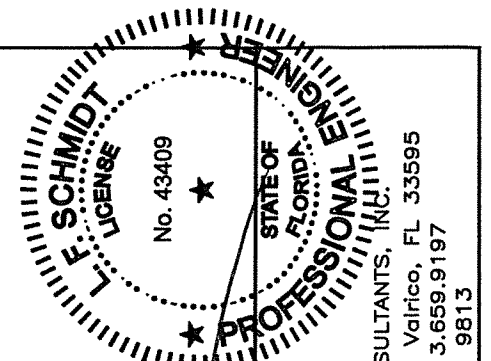
DETAIL 1



FRAME ANCHORING
OX Shown (XO - Similar)



DETAIL 2
Outswing Shown
(Inswing Similar)



October 12, 2017
 Documents Prepared By:
 Lyndon F. Schmidt
 P.E. No. 43409

R.W. BUILDING CONSULTANTS, INC.
 P.O. Box 230, Valrico, FL 33595
 Phone No.: 813.659.9197
 FBPE C.A. No. 9813

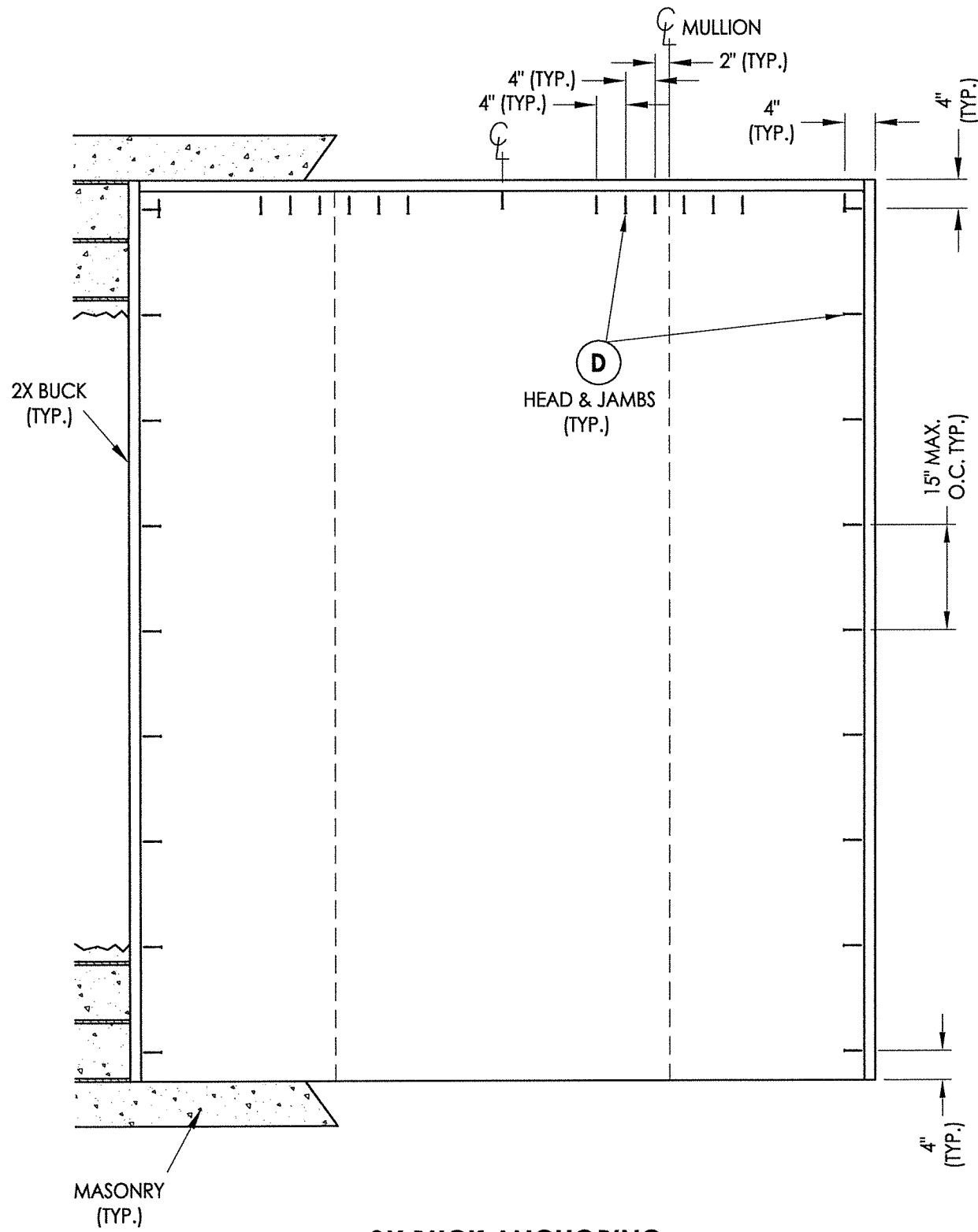
PRODUCT: SOUTHEASTERN SASH & DOOR WOOD DOOR
 PART OR ASSEMBLY: BUCK & FRAME ANCHORING (OX)

NO.	DATE	REVISIONS
1	10/12/17	UPDATE TO 6TH ED. (2017) FBC
		LFS
		BY

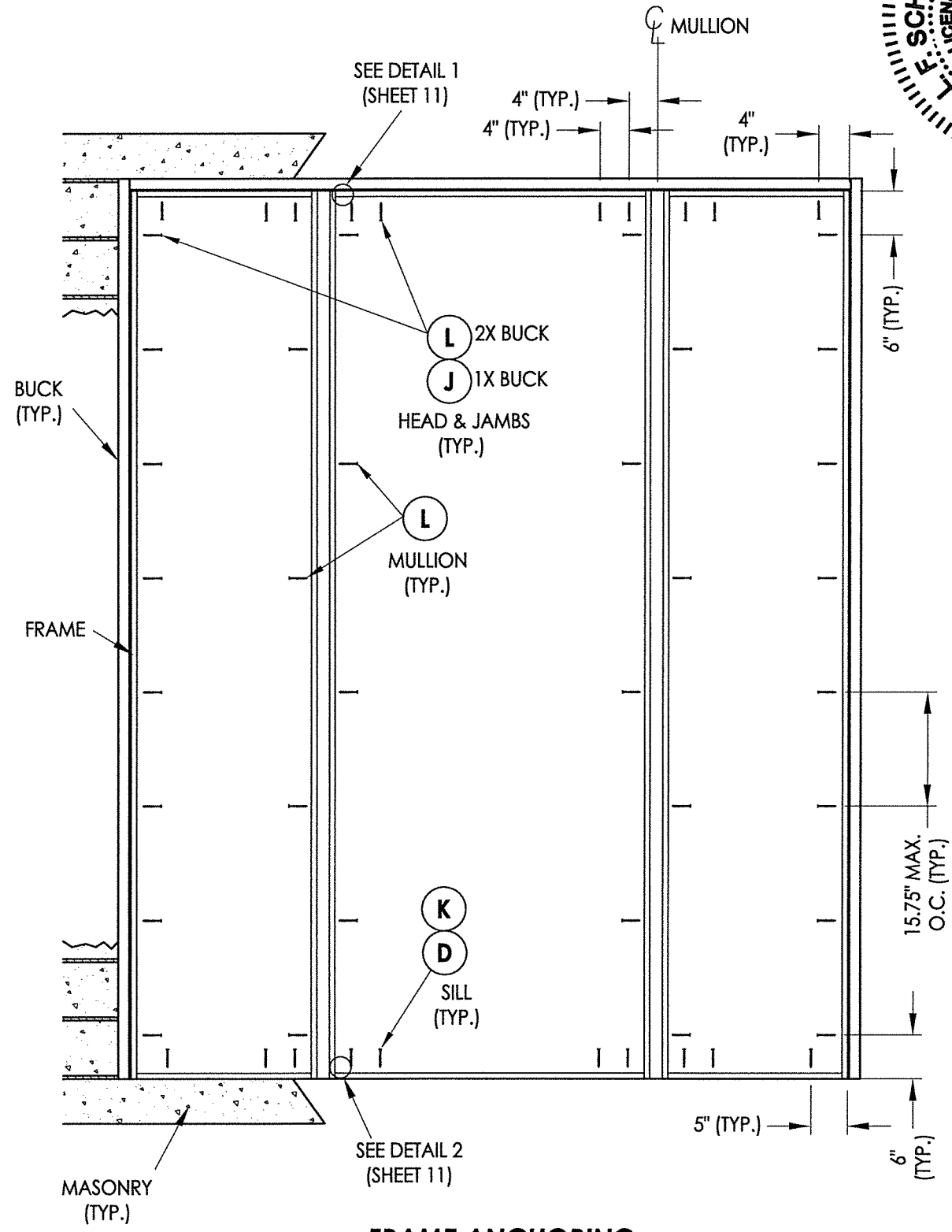
DATE: 5/10/17
 SCALE: N.T.S.
 DWG. BY: JK
 CHK. BY: LFS
 DRAWING NO.: FL-22347.7
 SHEET 11 OF 14

NOTE:
 1. ALL FRAME CORNERS SECURED WITH (3) #8 X 2-1/2" FH DEEP THREAD WOOD SCREWS @ SILL.

R:\Clients\Southeastern Sash & Door\A - Florida Product Approvals\FL-22347\Drawings\FL-22347\FL-22347-6-8.dwg, 12.2

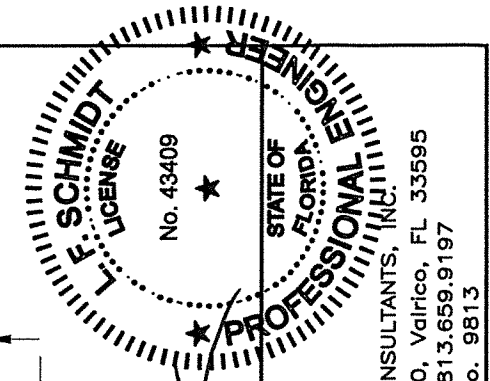


2X BUCK ANCHORING
OXO Shown



FRAME ANCHORING
OXO Shown

NOTE:
1. ALL FRAME CORNERS SECURED WITH (3) #8 X 2-1/2" FH DEEP THREAD WOOD SCREWS @ SILL.



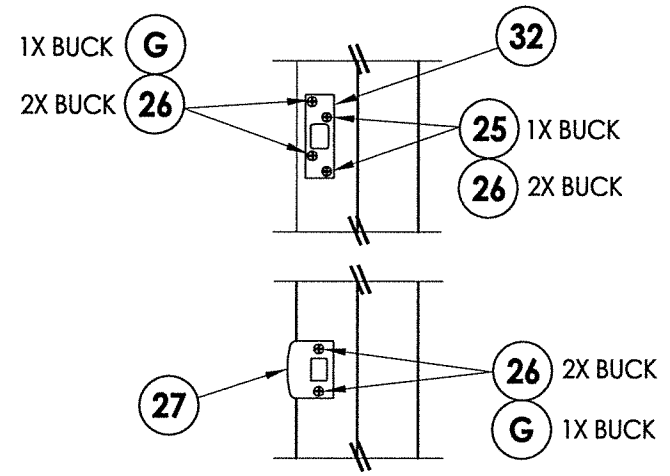
October 12, 2017
Documents Prepared By:
Lyndon F. Schmidt
P.E. No. 43409
RW BUILDING CONSULTANTS, INC.
P.O. Box 230, Valrico, FL 33595
Phone No.: 813.659.9197
FBPE C.A. No. 9813

PRODUCT:
SOUTHEASTERN SASH & DOOR
WOOD DOOR
PART OR ASSEMBLY:
BUCK & FRAME ANCHORING
(OXO)

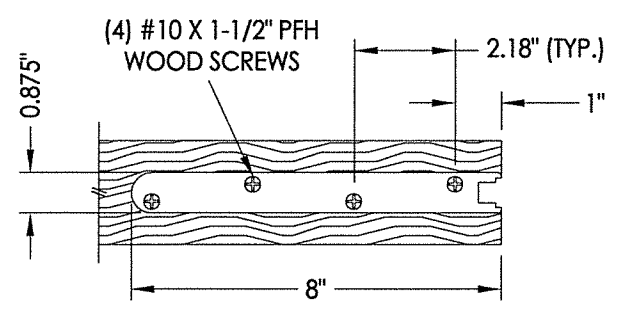
NO.	DATE	DESCRIPTION	BY
1	10/12/17	UPDATE TO 6TH ED. (2017) FBC	LFS
REVISIONS			

DATE: 5/10/17
SCALE: N.T.S.
DWG. BY: JK
CHK. BY: LFS
DRAWING NO.: FL-22347.7
SHEET 12 OF 14

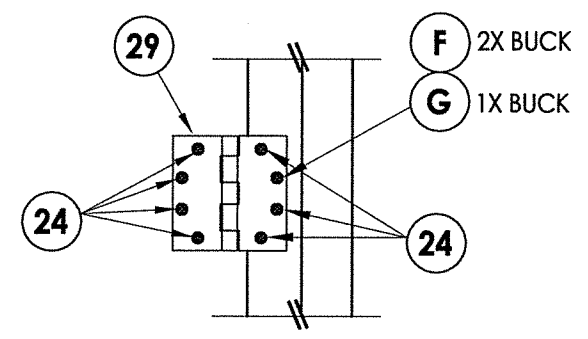
R:\Clients\Southeastern Sash & Door\A - Florida Product Approvals\FL-22347\C - Drawings\FL 22347 (2017)\FL-22347.6-8.dwg, 13.2



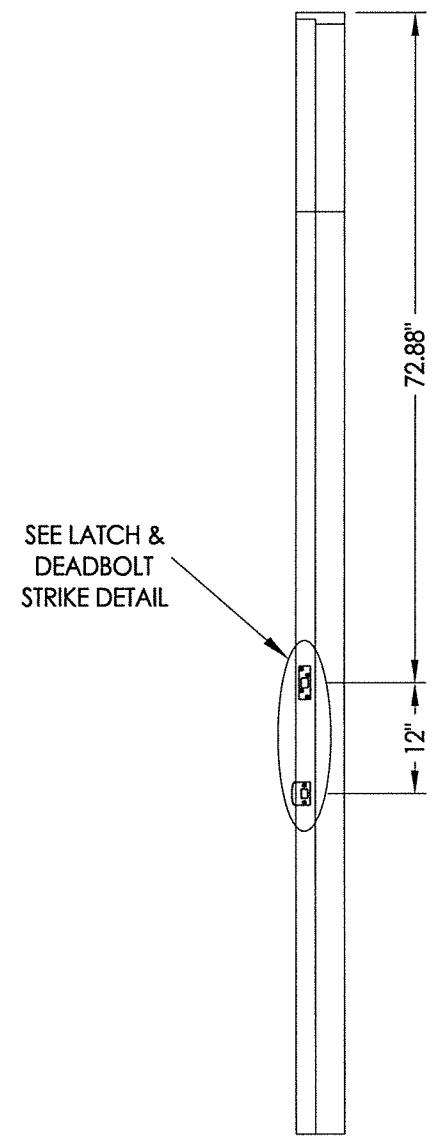
LATCH & DEADBOLT STRIKE DETAIL



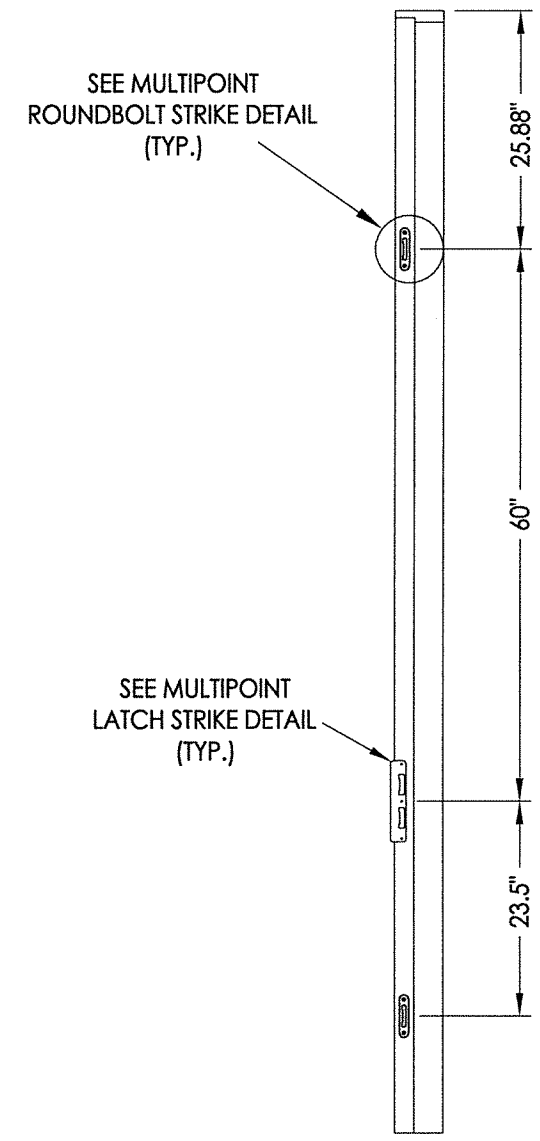
SHOOTBOLT REINFORCEMENT
AT TOP & BOTTOM OF DOOR PANEL
(1/8" THICK STEEL)



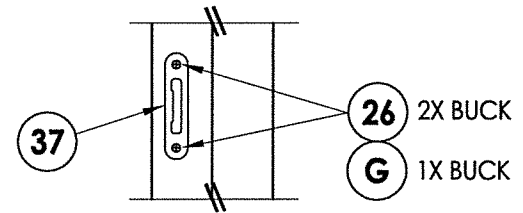
HINGE DETAIL



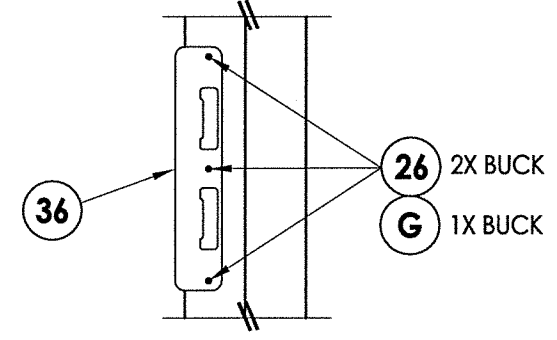
LATCH & DEADBOLT DETAILS



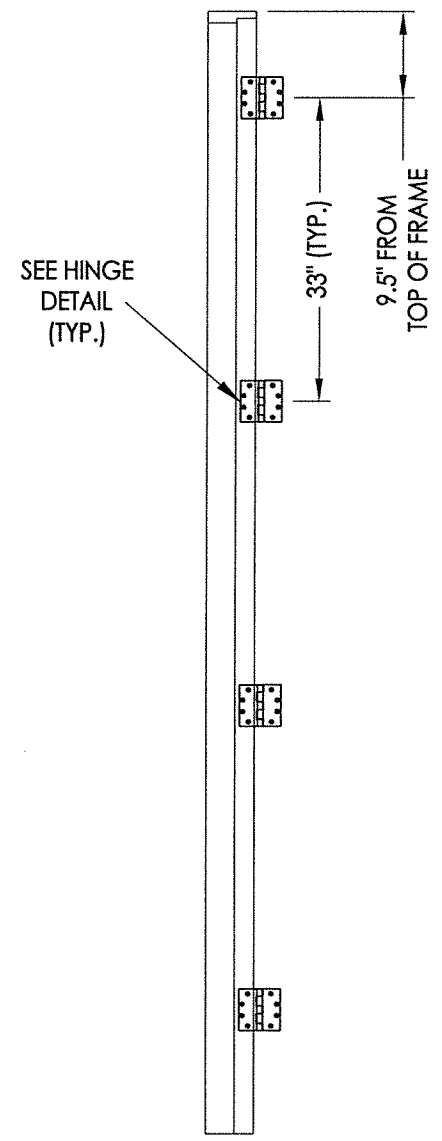
MULTIPOINT LOCK DETAILS



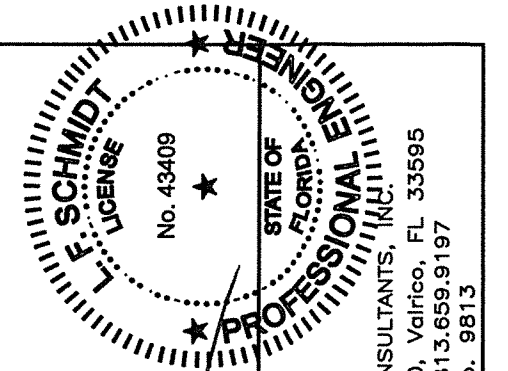
MULTIPOINT ROUND BOLT STRIKE DETAIL



MULTIPOINT STRIKE DETAIL



HINGE JAMB



October 12, 2017
Documents Prepared By:
Lyndon F. Schmidt
P.E. No. 43409

RW BUILDING CONSULTANTS, INC.
P.O. Box 230, Valrico, FL 33595
Phone No.: 813.659.9197
FBPE C.A. No. 9813

PRODUCT: SOUTHEASTERN SASH & DOOR WOOD DOOR		PART OR ASSEMBLY: HARDWARE DETAILS	
NO.	DATE	BY	REVISIONS
1	10/12/17	FBC	UPDATE TO 6TH ED. (2017)
		LFS	
DATE: 5/10/17			
SCALE: N.T.S.			
DWG. BY: JK			
CHK. BY: LFS			
DRAWING NO.: FL-22347.7			
SHEET 13 of 14			

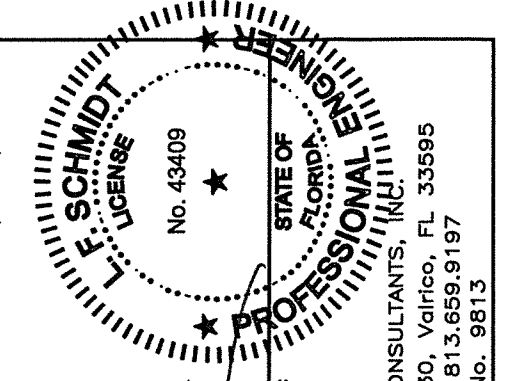
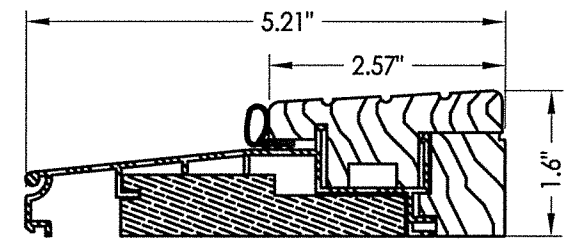
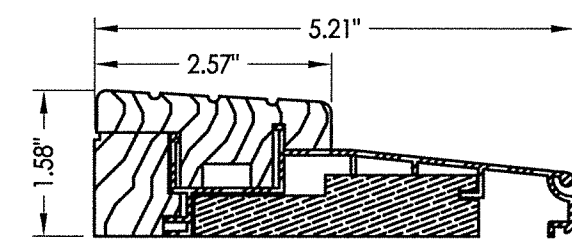
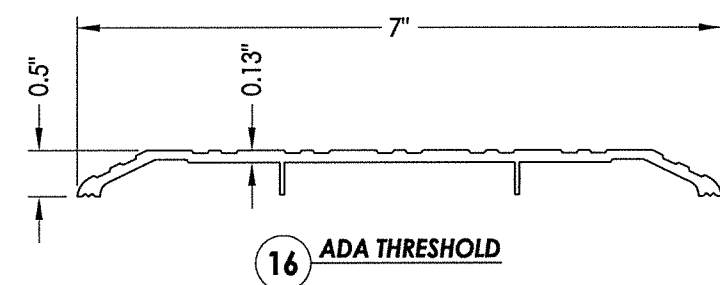
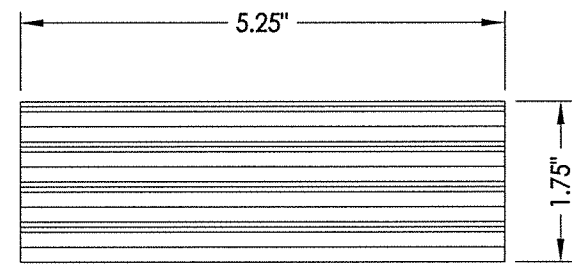
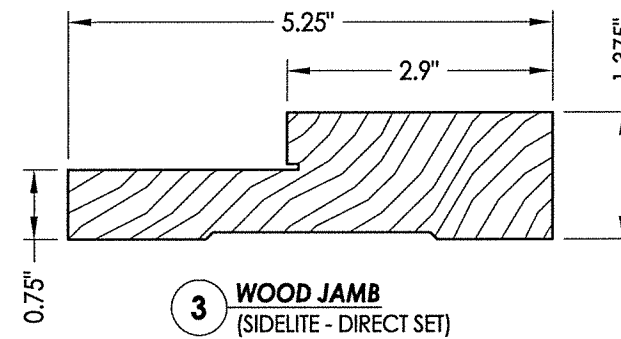
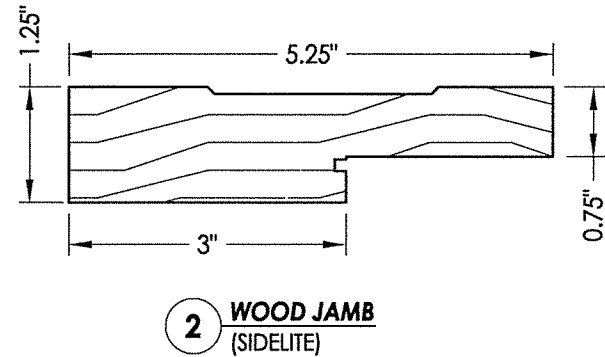
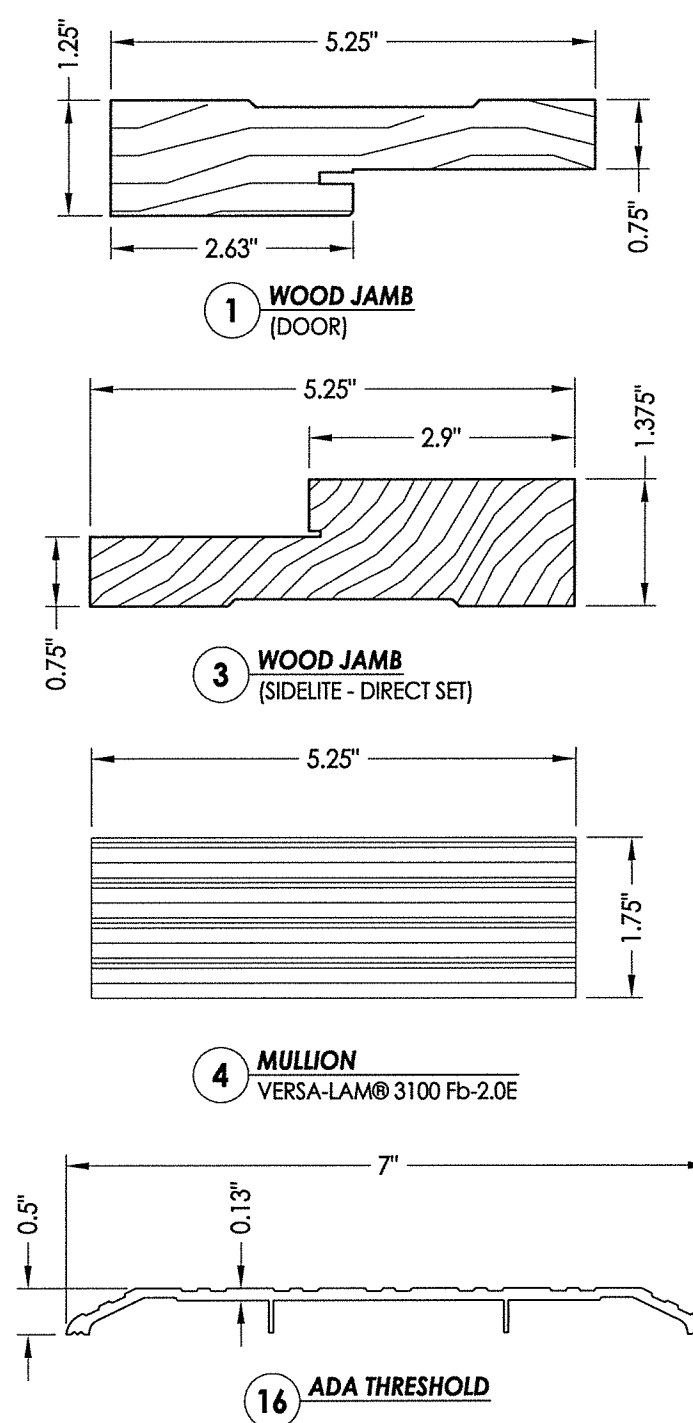
© 2017 R.W. BUILDING CONSULTANTS INC.

R:\Clients\Southeastern Sash & Door\A - Florida Product Approvals\FL-22347\Drawings\FL-22347-6-8.dwg, 14.2

BILL OF MATERIALS

ITEM #	DESCRIPTION	MATERIAL
A	1X BUCK (SG >= 0.42)	WOOD
B	2X BUCK (SG >= 0.42)	WOOD
C	1/4" MAX. SHIM SPACE	-
D	1/4" X 2-3/4" PFH ELCO OR ITW CONCRETE SCREW	STEEL
E	MASONRY - 3,000 PSI MIN. CONCRETE CONFORMING TO ACI 301 OR HOLLOW BLOCK CONFORMING TO ASTM C90	CONCRETE
F	#12 X 2-1/2" PFH WOOD SCREW	STEEL
G	3/16" X 3-1/4" PFH ITW CONCRETE SCREW	STEEL
J	1/4" X 3-3/4" PFH ELCO OR ITW CONCRETE SCREW	STEEL
K	1/4" X 1-3/4" PFH ELCO OR ITW CONCRETE SCREW	STEEL
L	#10 X 2-1/2" PFH WOOD SCREW (1.15" MIN. EMBEDMENT)	STEEL
1	JAMB (DOOR)	WOOD
2	JAMB (SIDELITE)	WOOD
3	JAMB (SIDELITE - DIRECT SET)	WOOD
4	MULLION	LVL
7	WEATHERSTRIP	FOAM
8	SWEEP	VINYL
14	OUTSWING THRESHOLD	ALUM/COMP
15	INSWING THRESHOLD	ALUM/COMP
16	ADA THRESHOLD	ALUM
22	#10 X 2" PFH WOOD SCREW	STEEL
24	#12 X 1" PFH WOOD SCREW	STEEL
25	#8 X 1-3/4" PFH WOOD SCREW	STEEL
26	#8 X 2-1/2" PFH WOOD SCREW	STEEL
27	LATCH STRIKE PLATE	STEEL
29	4.5" X 4.5" HINGE	STEEL
30	#8 X 3/4" FH SMS	STEEL
31	SHOOTBOLT STRIKE PLATE	STEEL
32	DEADBOLT SECURITY STRIKE PLATE	STEEL
36	MULTIPOINT STRIKE PLATE	STEEL
37	MULTIPOINT ROUND BOLT STRIKE DETAIL	STEEL
40	DOOR PANEL	WOOD
41	DOOR PANEL	WOOD
50	SIDELITE PANEL	WOOD
51	SIDELITE PANEL (DIRECT SET)	WOOD
70	TRANSOM PANEL	WOOD

WOOD FRAME COMPONENTS: SIPO (UTILE) (G = 0.53)



October 12, 2017
 Documents Prepared By:
 Lyndon F. Schmidt
 P.E. No. 43409
 R.W. BUILDING CONSULTANTS, INC.
 P.O. Box 230, Valrico, FL 33595
 Phone No.: 813.659.9197
 FBPE C.A. No. 9813

PRODUCT:
 SOUTHEASTERN SASH & DOOR
 WOOD DOOR
 PART OR ASSEMBLY:
 BILL OF MATERIALS
 & COMPONENTS

NO.	DATE	REVISIONS
1	10/12/17	UPDATE TO 6TH ED. (2017) FBC
		LFS
		BY

DATE: 5/10/17
 SCALE: N.T.S.
 DWG. BY: JK
 CHK. BY: LFS
 DRAWING NO.: FL-22347.7
 SHEET 14 OF 14

CONCRETE ANCHOR NOTES:

- Concrete anchor locations at the corners may be adjusted to maintain the min. edge distance to mortar joints.
- Concrete anchor locations noted as "MAX. ON CENTER" must be adjusted to maintain the min. edge distance to mortar joints, additional concrete anchors may be required to ensure the "MAX. ON CENTER" dimension are not exceeded.
- Concrete anchor table:

ANCHOR TYPE	ANCHOR SIZE	MIN. EMBEDMENT	MIN. CLEARANCE TO MASONRY EDGE	MIN. CLEARANCE TO ADJACENT ANCHOR
ITW TAPCON®	1/4"	1-1/4"	2"	4"
ELCO ULTRACON®	1/4"	1-1/4"	1"	4"
ITW TAPCON®	3/16"	1-1/4"	3"	1-1/2"

WOOD SCREW INSTALLATION NOTES:

- Maintain a minimum 5/8" edge distance, 1" end distance, & 1" o.c. spacing of wood screws to prevent the splitting of wood.

© 2017 R.W. BUILDING CONSULTANTS INC.